



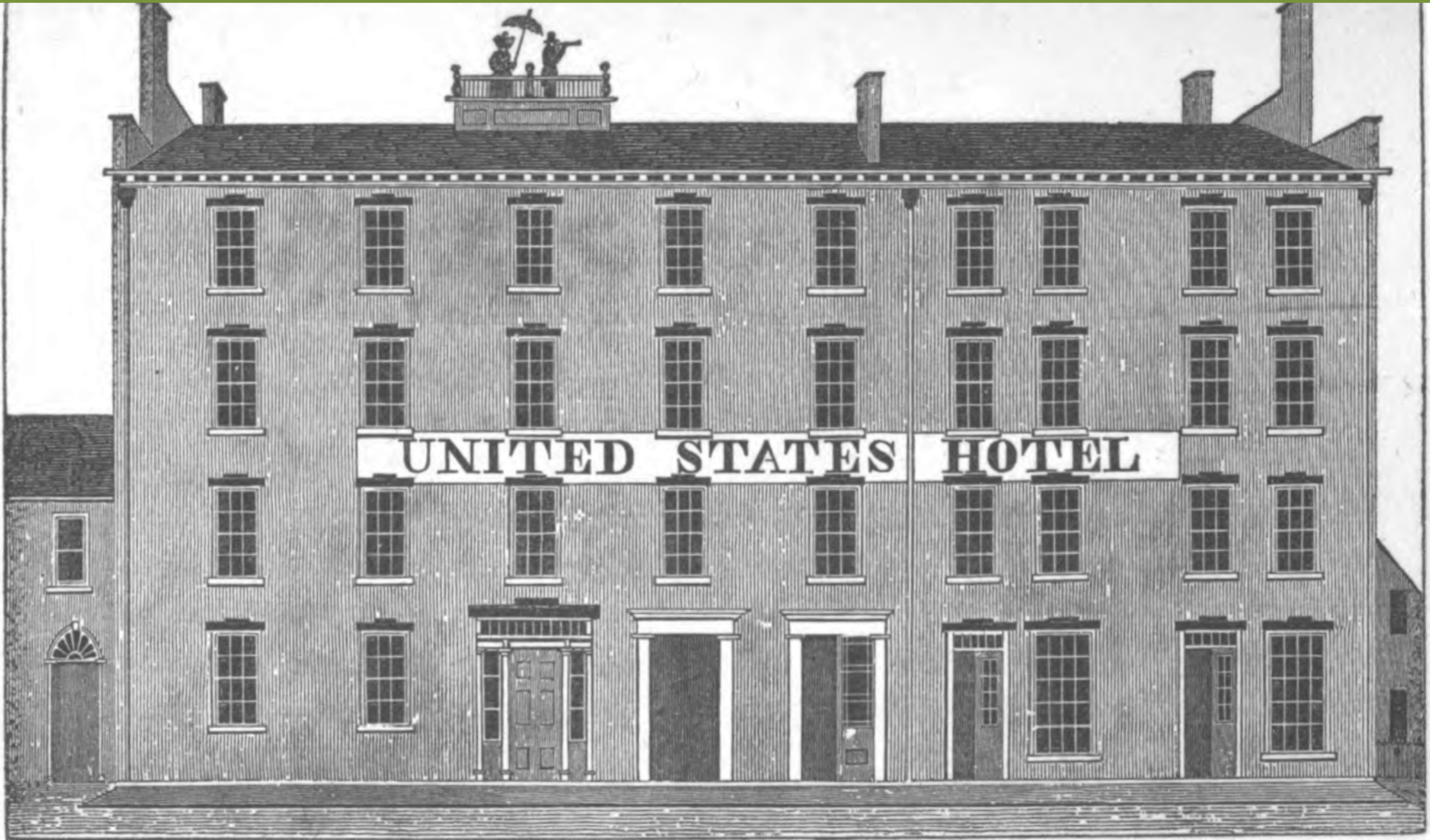
# History of the University Health Service

January 5, 2023

# Founding

- The University of Rochester opened its doors in November 1850 with 33 male students.
- Classes were conducted in the former United States Hotel on what is now West Main Street, which the University rented before purchasing it.
- A few students rented rooms in the basement.

# University of Rochester 1850



**UNITED STATES HOTEL.**

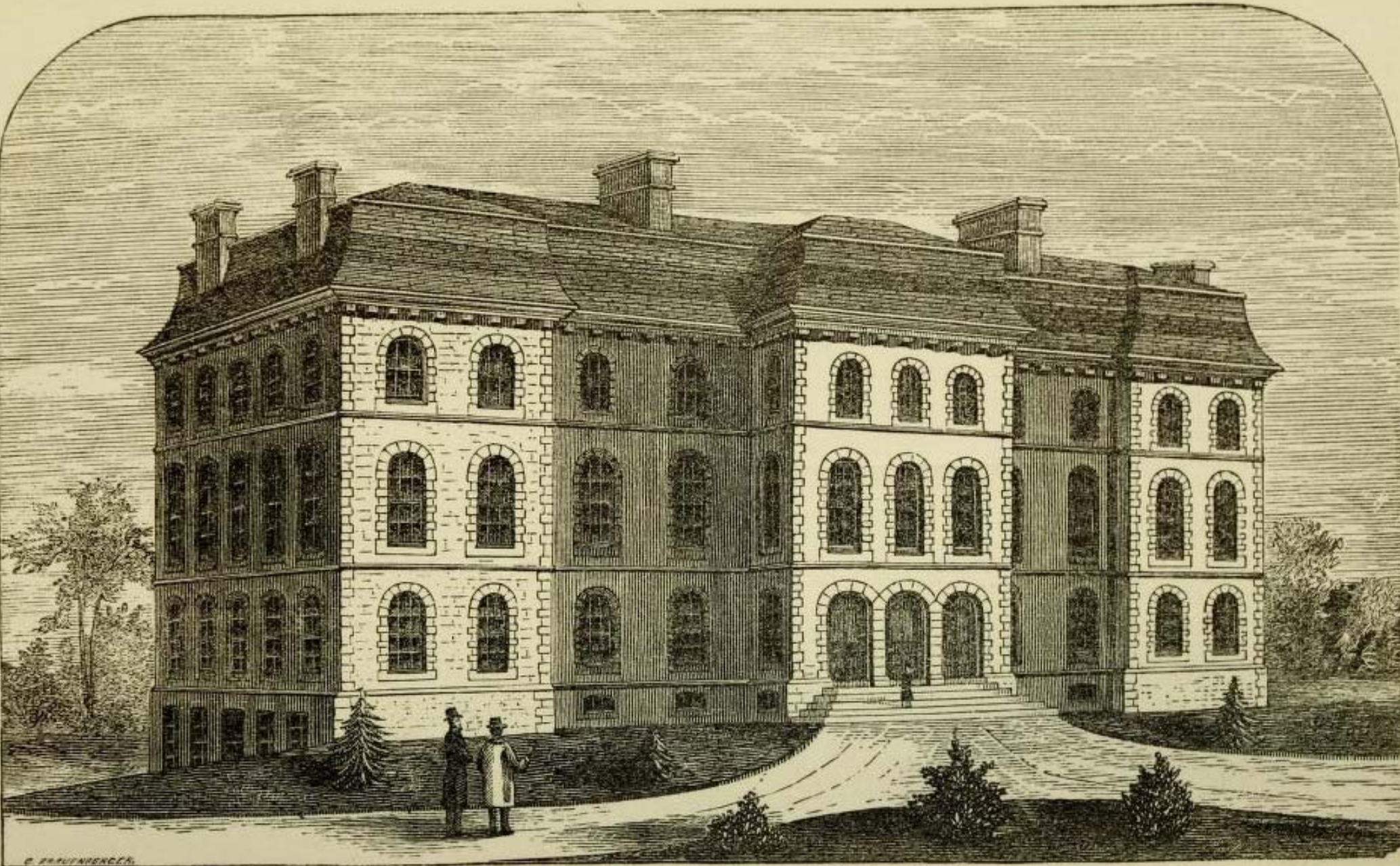
**Kept by George Gates. The Tonnewanta Railroad termination and the junction of the Erie and Genesee Valley Canals are close to this Hotel. Built of brick and stone, with a wing extending to the rear.**



# Prince Street Campus

- Azariah Boody donated 8 acres of land to the University in 1853 and sold another 16.79 acres for \$16,790, which comprised the Prince Street Campus.
- The University built a new building on the land that opened in late 1861, shortly after the Civil War had begun.
- Enrollment dropped during the war from a peak of 160 students to 100 as students joined the Army.

# University of Rochester 1861



ANDERSON HALL.  
[UNIVERSITY OF ROCHESTER.]

# Dormitory for Men

- Prior to 1913 all students lived in off-campus fraternity houses or roomed with “good Christian families.”
- Kendrick Hall was opened in 1913 to house 24 men.



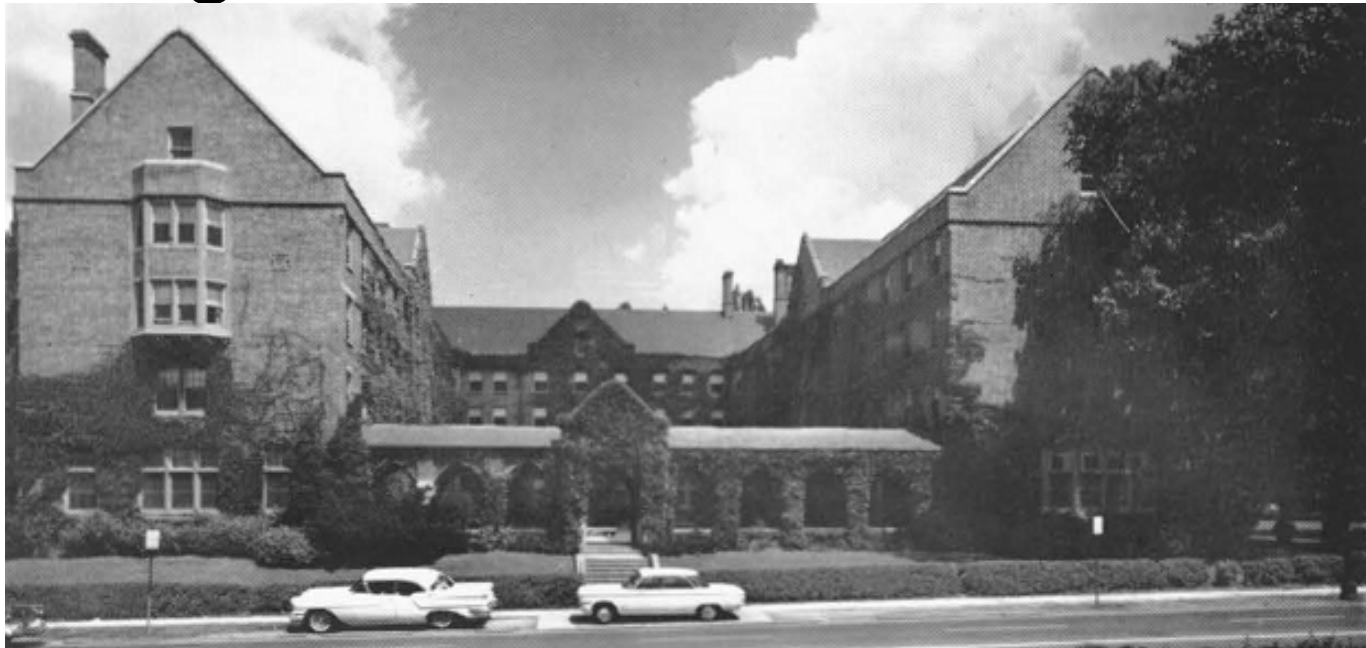
# Women Admitted in 1900

- 33 women were admitted to the University in 1900 due to efforts by Susan B. Anthony and anthropologist Lewis Henry Morgan.
- They joined 210 male students.
- Classes were run on a “co-ordinate” system, with separate sections for women.
- A Women’s College was established on the Prince Street Campus after the men moved to the new River Campus in 1930.

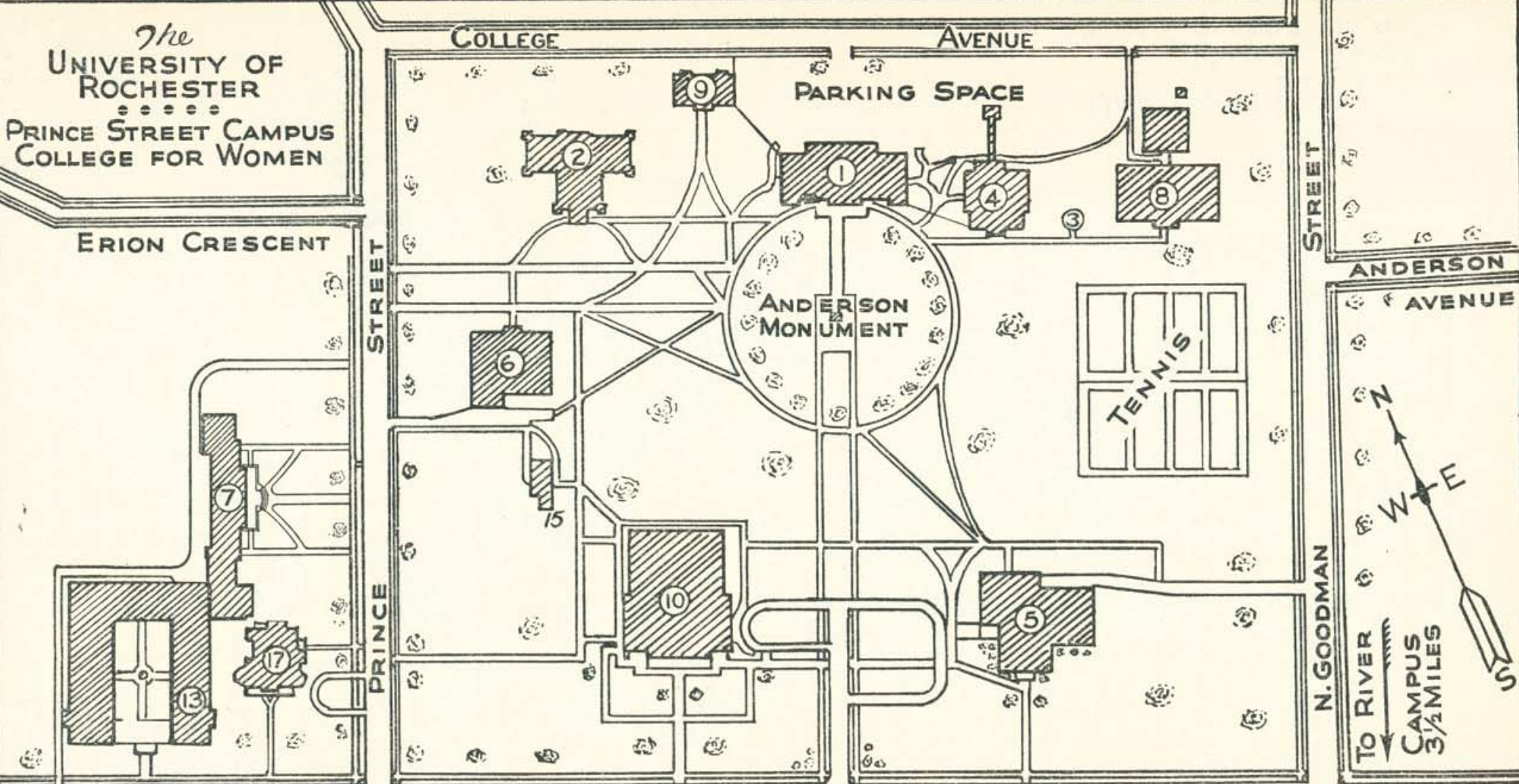


# Eastman School of Music

- George Eastman funded a new school of music that opened in downtown Rochester in 1921.
- The school enrolled a large number of out-of-town women and a women's dormitory opened on the Prince Street Campus in 1925 to house 210 girls.



1952



- |                        |                           |  |
|------------------------|---------------------------|--|
| 1. ANDERSON HALL       | 7. MUNRO HALL             | 13. STEPHEN FOSTER HALL                        |
| 2. SIBLEY HALL         | 8. CARNEGIE HALL          | 14. ADMINISTRATION OFFICES<br>15 PRINCE STREET |
| 3. OBSERVATORY         | 9. KENDRICK HALL          | 15. FACULTY CLUB                               |
| 4. REYNOLDS LABORATORY | 10. MEMORIAL ART GALLERY  | 16. HELEN BRAGDON HOUSE                        |
| 5. CUTLER UNION        | 11. CATHARINE STRONG HALL | 17. SEELYE HOUSE                               |
| 6. EASTMAN LABORATORY  | 12. ANTHONY MEMORIAL HALL | 18. CASTLE HOUSE                               |
|                        |                           | 19. ALLTON HOUSE                               |

# Prince Street Campus

- Aerial photo from the early 1950s



# Local Health

- Rochester avoided major outbreaks of typhoid and cholera after the Civil War.
- Tuberculosis and Diphtheria were the primary concern of local health officials.
- Milk were identified as a major cause of disease and efforts were made to clean up the local supply.
- An outbreak of smallpox in 1902 was dealt with rapidly, as we'll see.

# 1918 Influenza Pandemic

- Most male students joined the Army or the local detachment of the Student Army Training Corps that was established on campus in 1918 with its own temporary barracks.
- The campus was shut down for short periods to avoid spreading the flu.
- Only one student is known to have died of the disease.

# Flexner Report (1910)

## **MEDICAL EDUCATION IN THE UNITED STATES AND CANADA**

**A REPORT TO  
THE CARNEGIE FOUNDATION  
FOR THE ADVANCEMENT OF TEACHING**

**BY  
ABRAHAM FLEXNER**

**WITH AN INTRODUCTION BY  
HENRY S. PRITCHETT  
PRESIDENT OF THE FOUNDATION**

# Flexner Report (1910)

- Flexner believed that existing Medical Schools were unreformable and recommended that new Medical Schools be established where there were no existing schools.
- He met with President Rush Rhees in 1920 and proposed that the University of Rochester build a new Medical School and Hospital.
- Rhees and Flexner met with George Eastman, who offered to provide \$5 million to match the contribution of John D. Rockefeller.

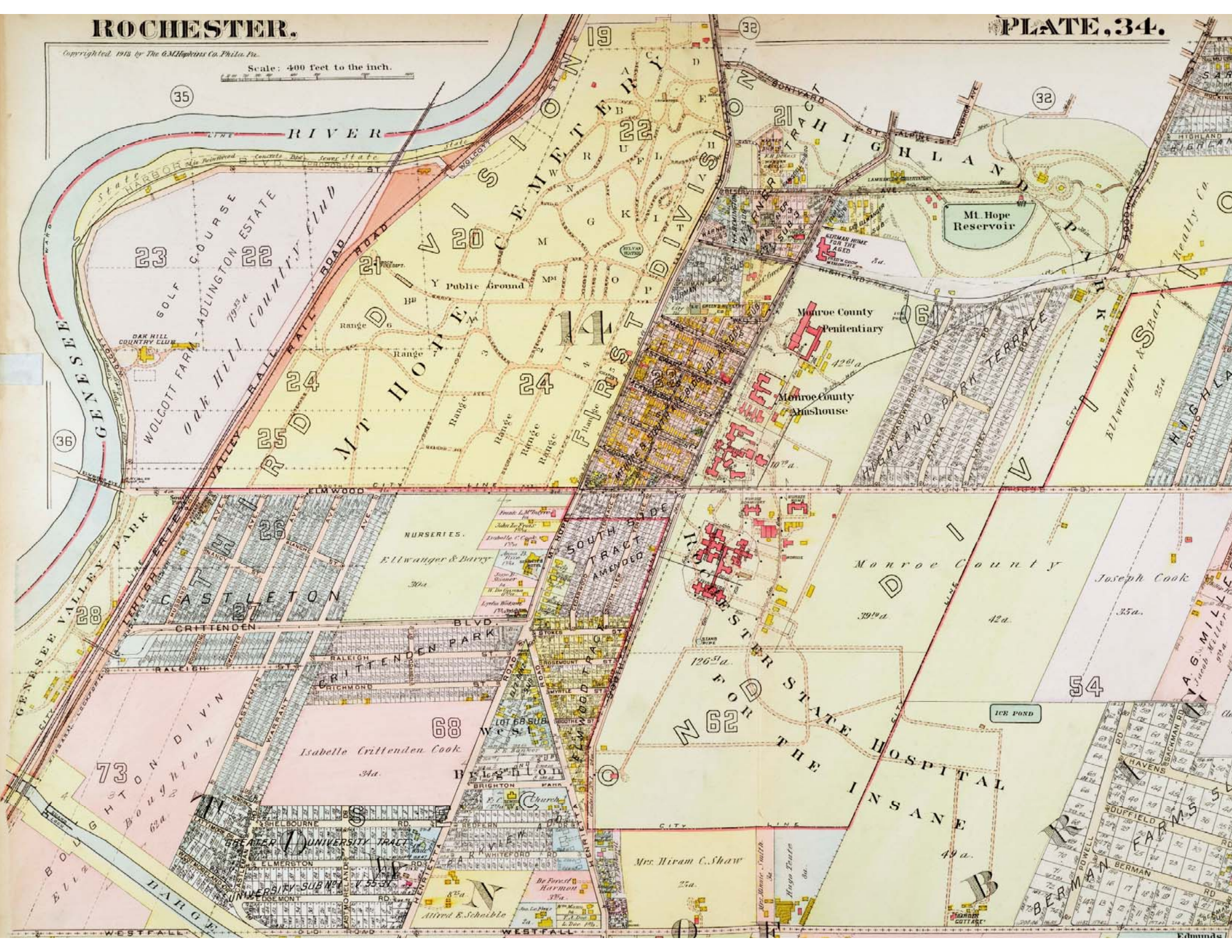
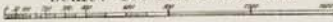
# New Medical School and Hospital

- Recognizing that the existing campus was too small to house the proposed Medical School and Hospital, several locations were considered, ideally with enough space to house a larger academic campus.
- A site on Elmwood Avenue was chosen for the new Medical Center and the adjacent Oak Hill golf course would house a new academic campus.
- The medical school opened in 1925 and the new Strong Memorial Hospital in 1926.



Copyrighted, 1913, by The G.M. Hopkins Co. Phila. Pa.

Scale: 400 feet to the inch.



# New Medical School and Hospital

- Strong Memorial Hospital opened its doors in February 1926.



# Medical Expenses

- In March of 1927 the college decided it will no longer pay for outside medical attention unless authorized by the college physician.
- Varsity athletes who are hors-de-combat will be taken care of at Strong Hospital.
- Students will continue to receive the attention of Dr. Edwin Fauver, college physician.

# Infirmary Fee

- A mandatory Infirmary Fee of \$5/year was imposed in the fall of 1927, but shortly thereafter was made optional due to opposition from local parents.
- Students who paid the fee could receive two weeks of care at Strong Hospital or an equivalent in out-patient services up to a maximum of \$70.
- The fee was increased to \$10/year in 1932 and made mandatory, which covered the cost of hospital care not to exceed \$80.

# Hospital Services

- By March of 1928, sixty-seven men had received care from Strong Memorial Hospital from October 1 to March 1, according , to Raymond N. Ball, treasurer of the University.
- The college paid to the hospital on account of services rendered to these men \$691.00, whereas the fees collected from the students amounted to a total of \$335.00. In several instances men have received services in the full amount of the \$70.00 to which the infirmary fee entitles them.

# Hope Hospital

- Original established as the City Pest House in 1869, it was pressed into service as a smallpox quarantine facility in 1902.
- A new Municipal Hospital was opened on Waring Road in 1903 and the Hope Hospital buildings were burned.

# Oak Hill (1900)



Hope  
Hospital

# Hope Hospital ca 1902

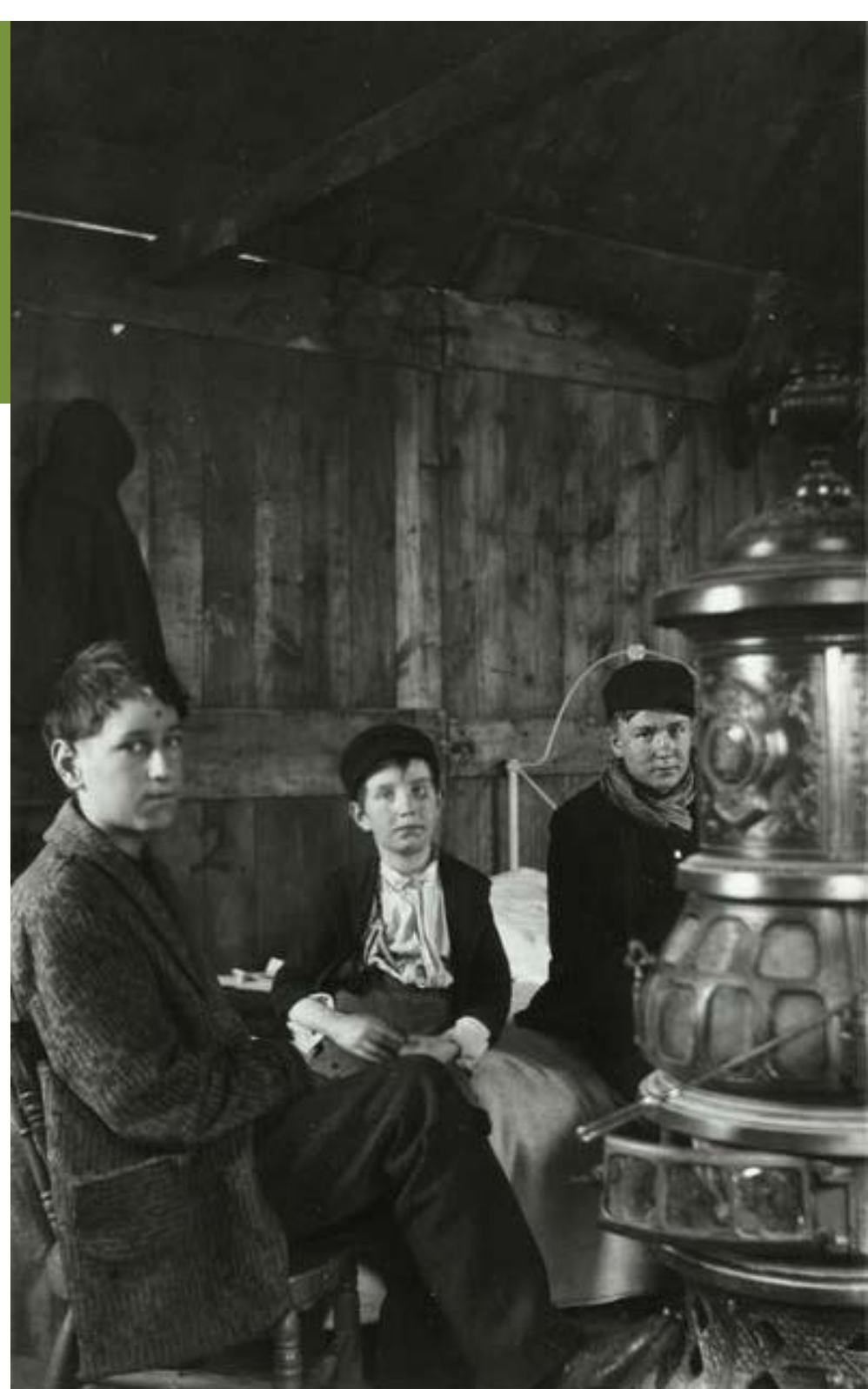




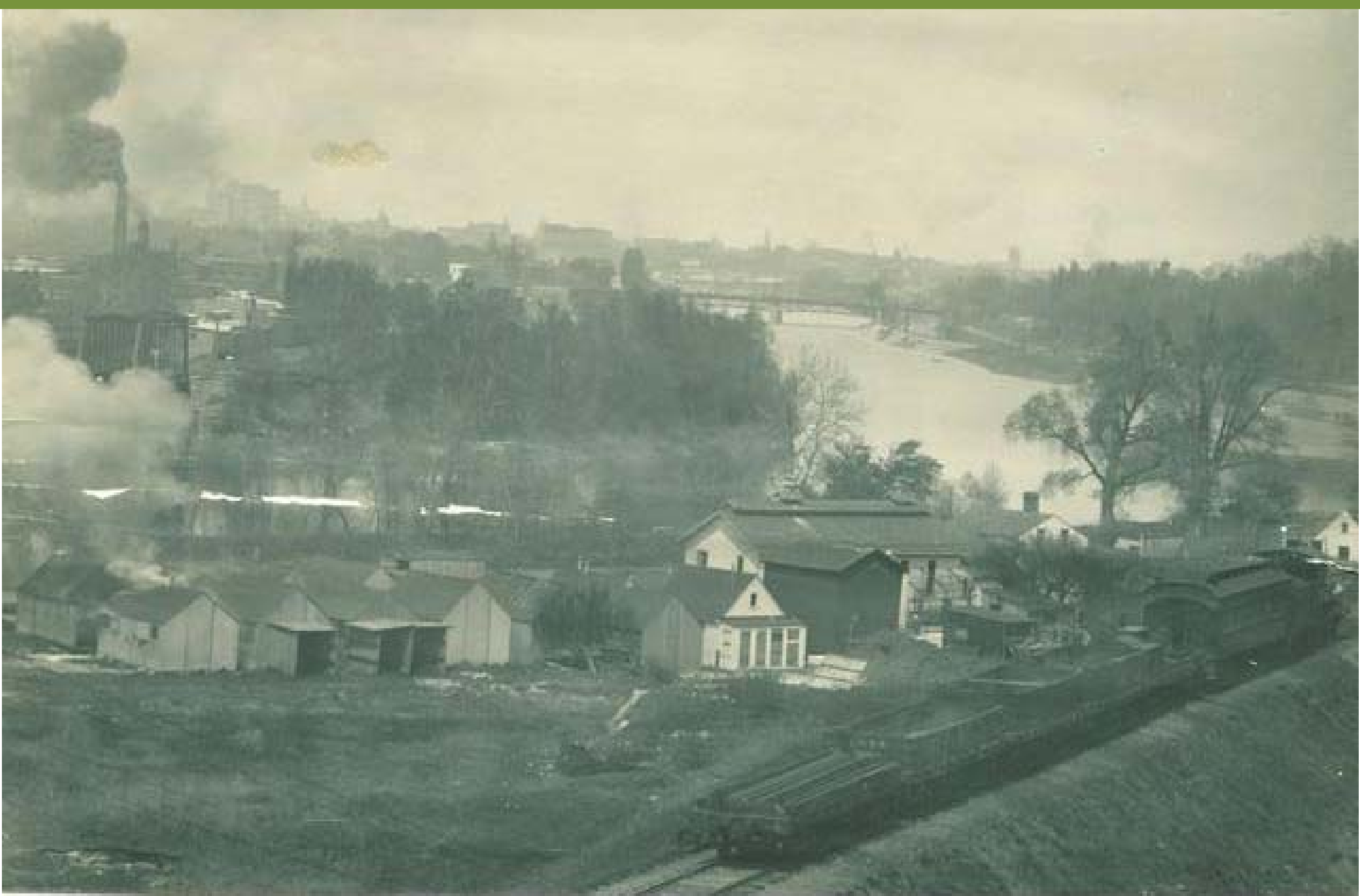
# Hope Hospital ca 1902



# Hope Hospital Smallpox Patients 1902



# Hope Hospital Burned May 1903



# Oak Hill Golf Course (1901)



1918



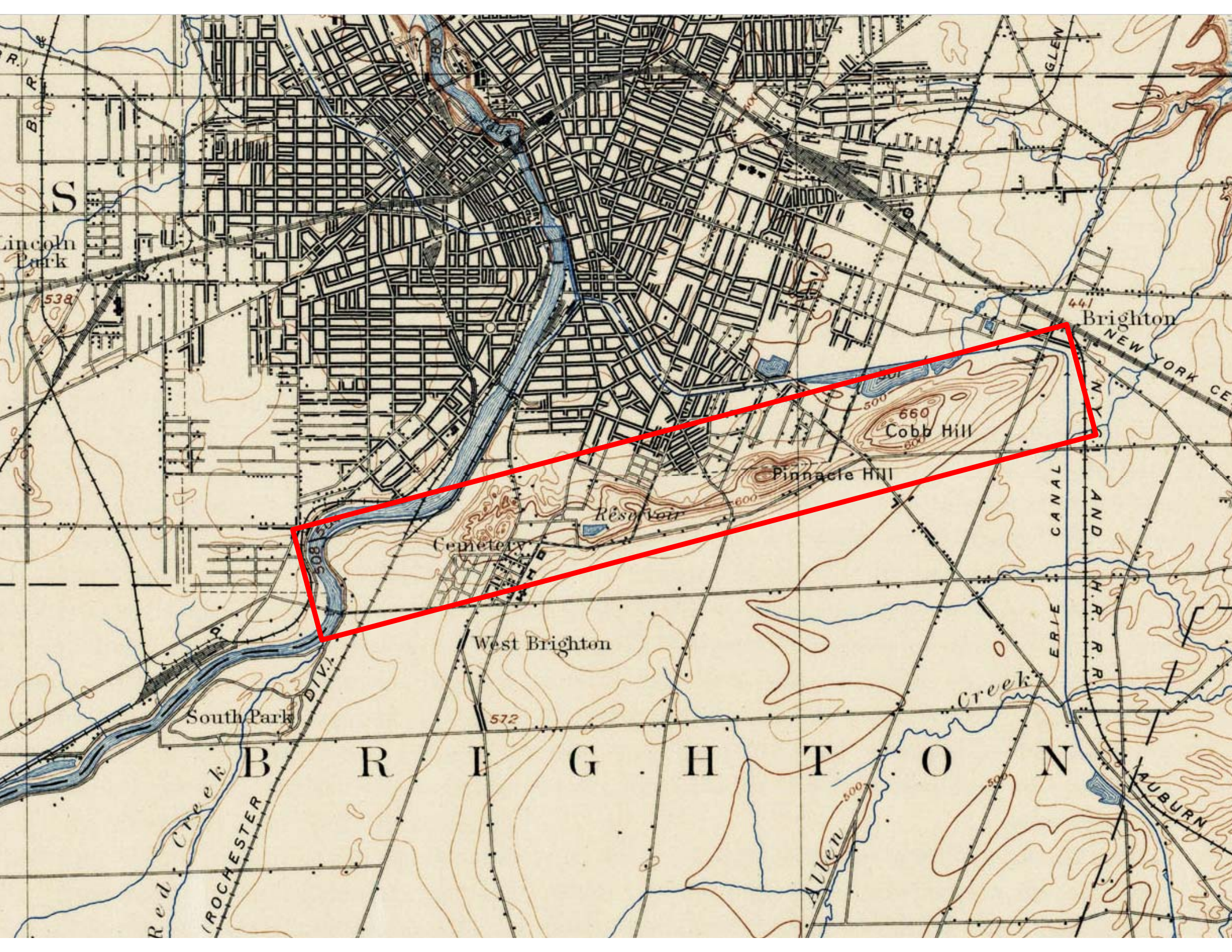
# 1911 Club House



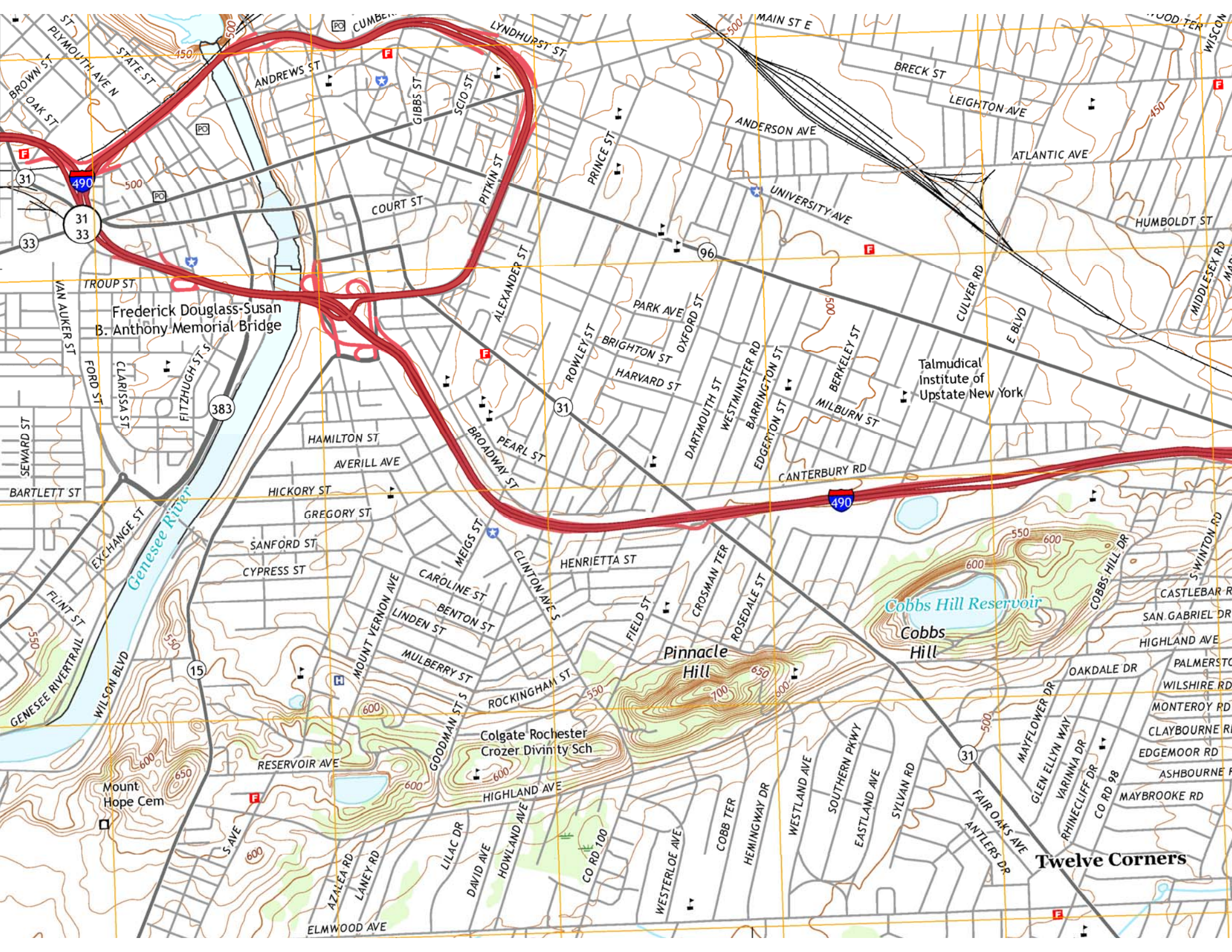
# Oak Hill Golf Course

- Layout of Oak Hill Golf Course









Frederick Douglass-Susan  
B. Anthony Memorial Bridge

Talmudical  
Institute of  
Upstate New York

Cobbs Hill Reservoir

Pinnacle  
Hill

Cobbs  
Hill

Colgate Rochester  
Crozer Divinity Sch

Twelve Corners

# New River Campus for Men

- The University agreed to buy and landscape a new 345-acre golf course in Pittsford for the Oak Hill Club in exchange for 80 acres of land along the Genesee River.
- The transfer took place in early 1926 and groundbreaking ceremonies for Lattimore hall were held on May 21, 1927, the same day that Charles Lindbergh landed in Paris.

# Oak Hill from across the river

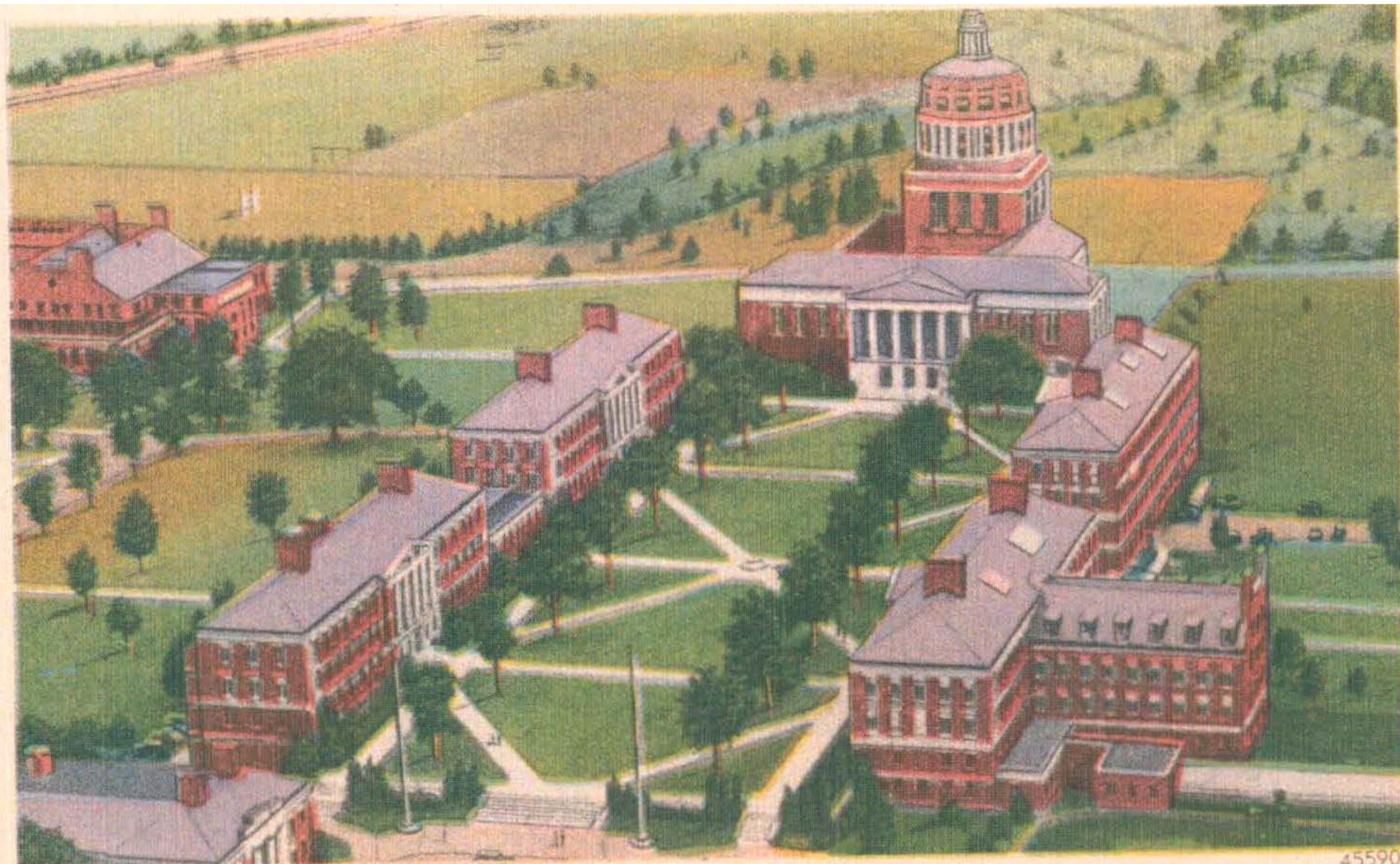


Oak Hill, Where a Continental Glacier Deposited It About 50,000 Years Ago—Photographed More Recently from a Point across the Genesee River, Showing Elevation of New Campus Site in Background

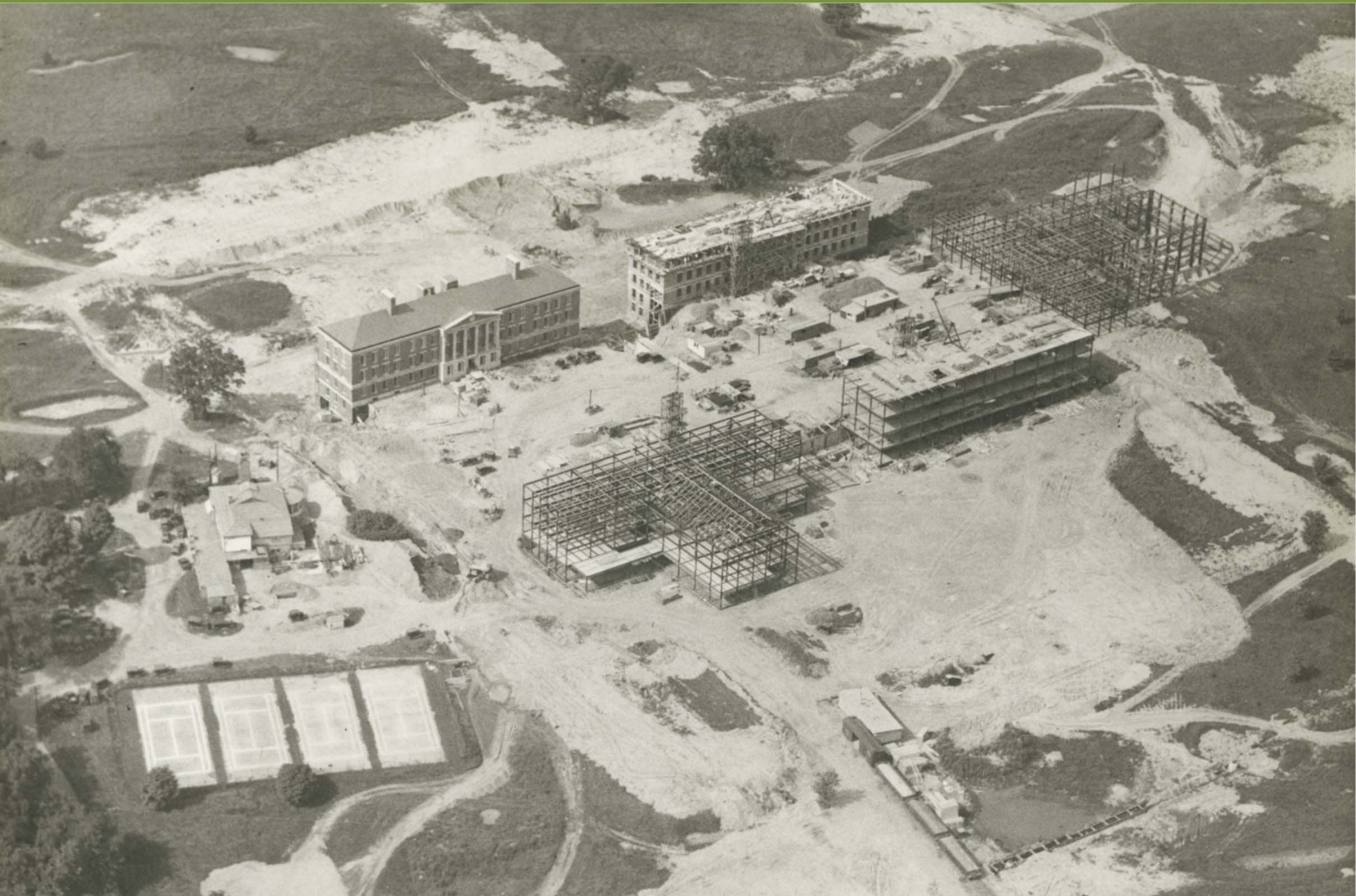
# Groundbreaking



# Rendering of Proposed Campus



# River Campus Under Construction 1928



# River Campus for Men

- The new Oak Hill campus opened in October 1930 with 657 male students.
- The 473 female students remained at the College for Women on the Prince Street Campus.
- Kendrick Hall on the Prince Street Campus was converted into a women's dorm and several other smaller buildings also housed women.

# River Campus





# Clinics and Infirmaries

- The Alumni Gym had a small outpatient clinic when it opened in 1930.
- A women's dormitory, Munroe Hall, was opened in 1939 on the Women's Campus and included a small infirmary on the first floor.
- The following year a make-shift infirmary was opened using unused rooms in Burton Hall on the River Campus.

# Merger of the Colleges 1955

- The 522 women joined 977 men on River Campus in 1955 and all of the buildings on the Prince Street Campus were sold except for the Memorial Art Gallery, Cutler Union and Eastman Dorms.
- An infirmary was included in the new Women's Residence Hall, later named for Susan B. Anthony.



# Vaccinations

- UHS promoted polio vaccines in the 1950s.
- Smallpox vaccination efforts were conducted at several times until 1980 when the disease had been eradicated in the U.S.
- New York State required that all first- and second-year college students born after January 1, 1957 to provide proof of immunity to mumps, measles and rubella.
- Non-compliant students would be disenrolled.

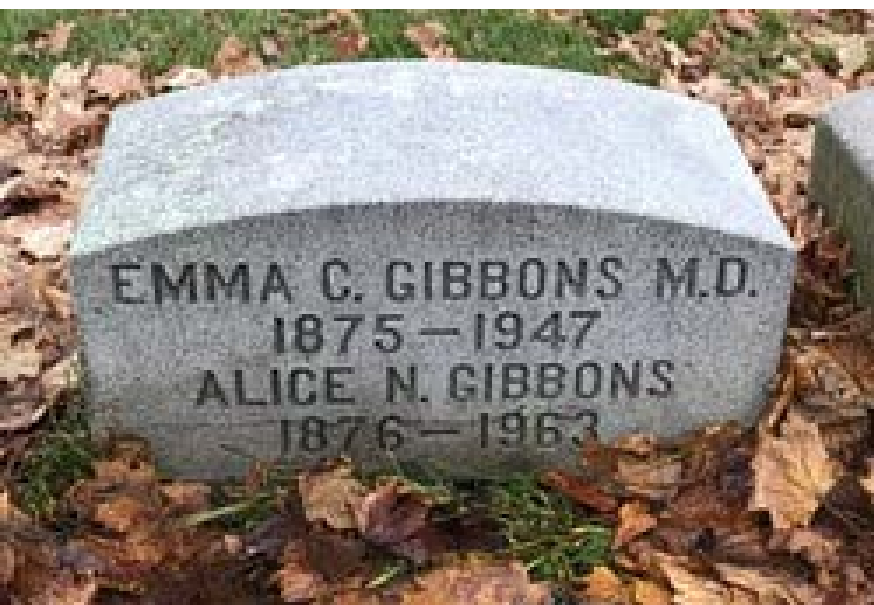
# Edwin Fauver (1875-1949)

- M.D. Columbia, 1909.
- Physical Education Director from 1916 to 1945.
- College Physician from 1921 to 1945.
- Fauver Stadium was named after him in 1950.
- Three earlier physical education directors had also been physicians, including John William Hobbs Pollard (1902-1905), Charles Crawford Stroud (1905-1910), and Dudley B. Reed (1910-1911).



# Emma Culross Gibson (1875-1947)

- Graduated from UR in 1907 and received her M.D. from McGill University in 1923.
- Established a private practice in Rochester and was Medical adviser for Eastman School women from 1926 to 1931.



# Gertrude Fischer McCann (1889-1956)

- M.D. Cornell, 1915
- Medical adviser to the Women's College from 1927 to 1931.
- Medical adviser to all University women from 1931 to 1942.



# John Fletcher McAmmond (1901-1983)

- M.D. Rochester 1931
- Physician for the Navy's V-12 program during World War II, which operated an infirmary in Strong Memorial Hospital.
- Appointed College Physician in 1946.
- Retired in 1966, but was asked to return for several years by the University.
- He was also the UR Golf coach for many years.



# John H. Flinn (1915-1995)

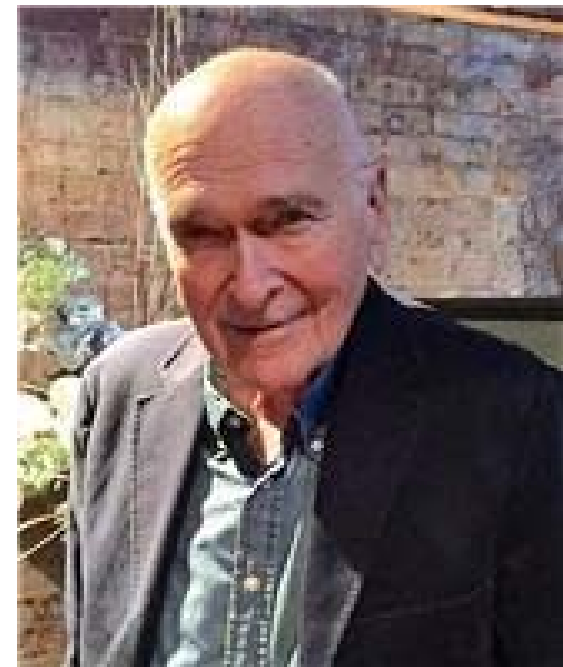
- M.D. Northwestern 1940
- Hired in 1962 to unify and oversee student health services on River Campus, the Eastman School, and the Medical School.
- Announced the relocation of the health services and that a new building would be “finished in three years.”
- First director of the new University Health Service from 1966 to 1970.





# Alex Braiman (1926-2018)

- Hired as first full-time psychiatrist for the student health service in 1963.
- M.D. State University of New York Downstate Medical College, 1951
- Also served as a professor of psychiatry at URMC from 1955 to 1996.



# University Health Service 1966

- In 1966 the University combined student and employee health programs into a single entity, known as the University Health Service.
- Outpatient services were moved to the hospital in 1967 and were relocated several times within that facility.
- Some health services for River Campus students remained in Susan B. Anthony, including a small infirmary.
- The infirmary became an outpatient clinic in 1995.

# Clifford B. Reifler (1932-1998)

- MD Yale 1957, Psychiatry and Public Health
- Head of UHS from 1970 to 1994
- Medical Director of Strong Memorial Hospital from 1983 to 1985.
- President of the American College Health Association in 1977 and 1978.
- Senior editor of the *Journal of American College Health* from 1986 to 1996.



# Psychological Services moves to UHS

- In 1991, the Mental Health Section of UHS absorbed Counseling and Psychological Services, which had been overseen by the Psychology Department on River Campus.
- Counseling and Mental Health Services changed its name to University Counseling Center in 2002.

# Ralph Manchester

- MD University of Vermont 1979
- Joined UHS in July 1983 and was appointed director in 1994.
- Interested in medical problems of musicians and serves as Editor of the *Journal of Performing Arts Medicine*.
- Past President of both the American College Health Association and the NYS College Health Association.



# Permanent Home

- UHS has moved many times between the River Campus and Medical Center, but these wanderings came to an end when a groundbreaking ceremony was held on May 16, 2007 for a new University Health Service Building adjacent to Susan B. Anthony Residence Hall, allowing all services to be delivered in one location.
- UHS also operates satellite offices at the Eastman School of Music and the University of Rochester Medical Center.

# Grand Opening

Provost Ralph Kuncel, UHS Director Ralph Manchester, President Joel Seligman, Lisa Willis, director of the University Counseling Center, Trustee Roger Friedlander, and Ann McMican, associate director for administration at UHS, cut the ribbon during the grand opening of the University Health Service Building on September 18, 2008. (notice who is in the sunlight...)



# UHS Building

- Opened on September 18, 2008.
- A fourth floor was completed in July 2020.







**Thank you!**

More information at:  
[facilities.rochester.edu/history/RC/UHS.htm](http://facilities.rochester.edu/history/RC/UHS.htm)

Please feel free to e-mail me if you have any questions:

[m.pierce@rochester.edu](mailto:m.pierce@rochester.edu)