

354362

The American School and University

A YEARBOOK DEVOTED TO THE DESIGN, CONSTRUCTION,
EQUIPMENT, UTILIZATION, AND MAINTENANCE OF
EDUCATIONAL BUILDINGS AND GROUNDS

1938

TENTH ANNUAL EDITION

COPYRIGHT, 1938

AMERICAN SCHOOL PUBLISHING CORPORATION

470 FOURTH AVENUE, NEW YORK



Nothing was considered foreign to the building's purposes that ministered in any helpful way to the hours spent outside the classroom. Billiard and other game rooms were therefore included and game instruction provided; the work activities of student organizations were cared for in a floor devoted to student offices.

Unit Construction

The building was planned for unit construction, partly owing to the initial lack of funds, but altogether a fortuitous circumstance in the light of rapidly changing social habits and campus needs since construction first began in 1928. With the enlightening experience of operating the commons and the social unit for nine years to guide it, the University can now plan the next unit with assurance.

It seems clear that what is most needed are the

community values supplied by an auditorium where large groups of students can feel the inspiration of common thought proceeding from a speaker, and share in common the recreation and the cultural development provided by student-created or professionally-presented drama, music, motion pictures, pageantry and dance. Plans are now being drawn, therefore, for an auditorium with full stage equipment, rehearsal rooms, scene-building workshops, and a small laboratory theater for experimental work.

The ultimate goal is to develop a community center with congenial accommodations for virtually every type of group activity, save athletic—that students may have the maximum opportunity for the profitable cultivation of leisure time and that the University may continue to be an authentic community of teachers and students.

Part III—A Small College Union

By CARL LAUTERBACH

Director (1930-36), Todd Union, College for Men, University of Rochester

TODD UNION (see page 483) was one of eleven buildings erected on a new campus beside the Genesee River during 1927-30 to make more adequate provision for the College for Men at the University of Rochester.

Requirements of the Union

There were a number of local factors to be considered in developing plans for Todd Union. The student body then numbered about 600, but in all probability would be increased to a total of 900 in a few years. There were about 225 resident students, all others being either citizens of the city of Rochester or commuters from surrounding towns. Fifty per cent of the students were fraternity men. At least seven fraternity houses were to be erected on the campus around a quadrangle facing the college Union. These houses would provide dormitory quarters, dining service, lounges, and other facilities. The provision for dining service in the Union building was to be based upon self-service breakfast and luncheon and table d'hôte dinner.

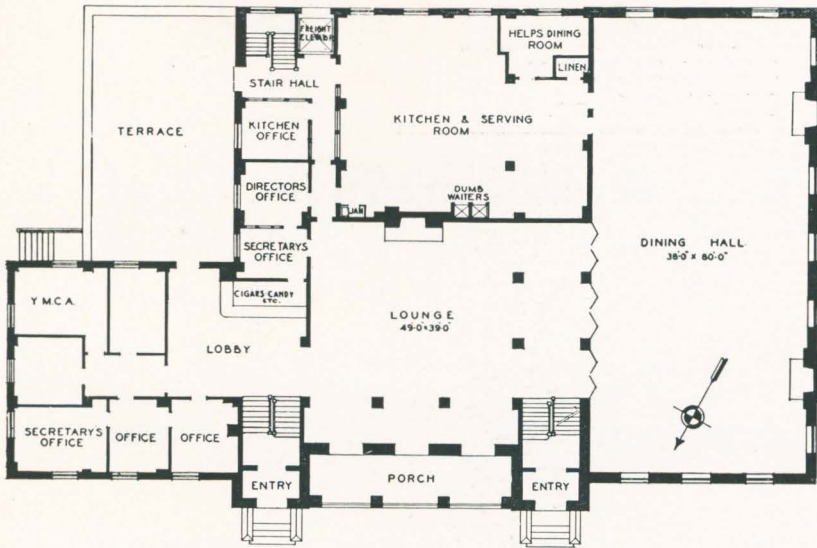
The floor layout was to be such that the large dining hall with the adjoining lounge would accommodate the college dances. The building was to be small at the outset, for the success of college unions in small colleges had not yet been fully demonstrated. For psychological reasons, it was hoped that the facilities

might be heavily taxed from the outset. Though the building was to be small, provision for future extensions should be planned. Quarters for food preparation were to be adequate to handle the larger service of the near future. The architecture must harmonize with the colonial pattern of other buildings, and the interior decoration must be in keeping with the colonial motif and should incorporate some of the early traditions of the Genesee Valley.

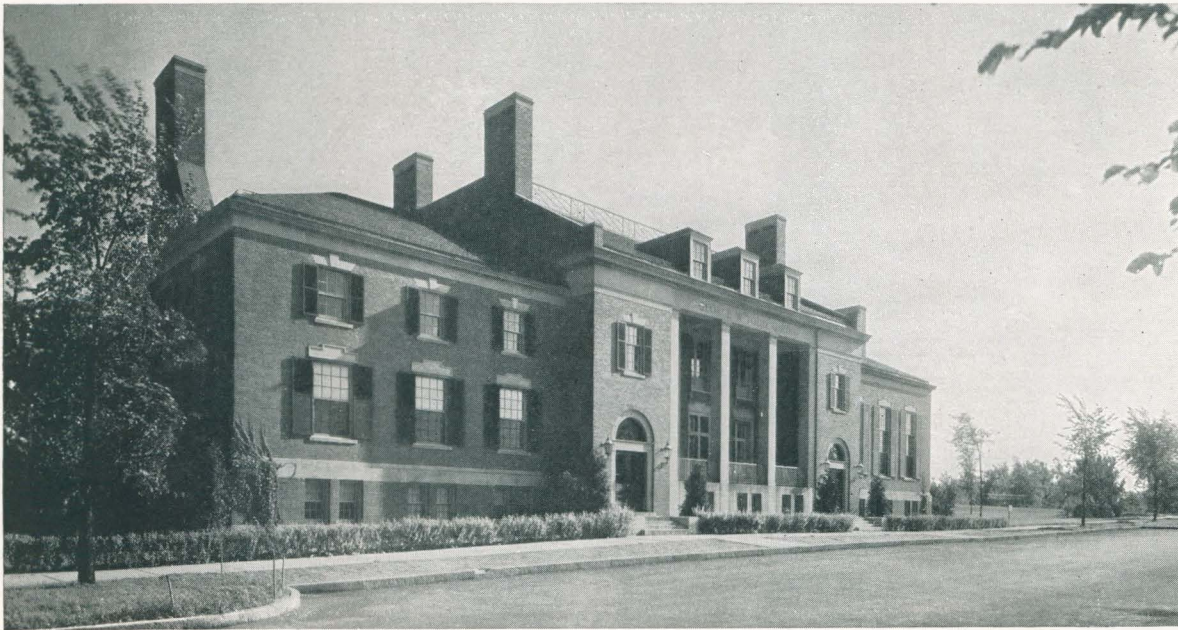
Use of Facilities Suggests Improvements

Todd Union opened its doors in 1930 and was heavily used from the first day. It has successfully provided the facilities (enumerated elsewhere in this issue) commonly found in small unions today, and through the program built up by the students around the facilities the Union makes "for the enrichment of our college life."

For the benefit of college administrators contemplating the erection of a small union building, it may be helpful to indicate changes that would be made as the result of experience could the building be rebuilt. They would include consolidation of the large dining halls and provision for two lounges instead of one; and, in addition to small committee rooms, there would be one large committee or club room, capable of comfortably accommodating thirty or forty students.



First floor plan



Todd Union, University of Rochester

Second floor plan

