

URMC INSIDER

Taking Concrete Steps Toward Strong's Bright Future

Work on the Strong Expansion Project continues through the summer, as crews give shape to an expanded, more modern ED and new patient tower.

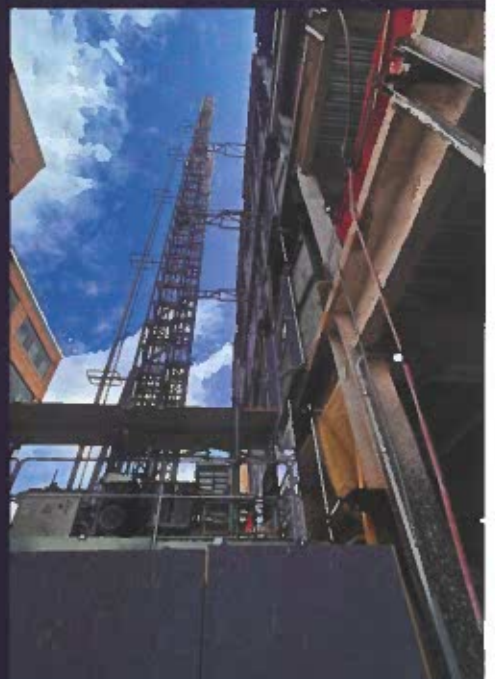
The project is in Phase 1A, planned to last through April 2027. Final completion is targeted for February 2029. *Timing is subject to change.*

Latest Highlights

- Exterior elevators (buck hoists) are on site to move people and materials.
- Structural steel is completed up to the seventh floor; framing started on ground floor
- Concrete slabs have been poured through the fourth floor
- Emergency generators are now in place
- The future loading dock is taking shape
- Interior modifications are helping integrate the new tower with existing spaces.
- Operational readiness meetings have begun to help prepare for upcoming relocations and workflows

Learn More

Visit the Strong Expansion intranet site:
StrongExpansion.urmc.rochester.edu



Bones, Brews, and Scenic Views: A Resident's Rochester Story

Orthopaedic resident **Ayodeji Jubril, MD**, chats with mentor **Susan M. McDowell, MD**, about his path to becoming a surgeon and what makes living and training in Rochester so rewarding. Filmed at a Finger Lakes brewery, this is the second video in our *Learners on Location* series. Watch the video here: (<https://bit.ly/40bCGUU>).



Nurse Residency Program Earns Top Designation

Strong's Nursing Transition to Practice Program has been awarded Accreditation with Distinction by the American Nurses Credentialing Center (ANCC), the highest honor for a program of its kind. Also known as the Nurse Residency Program, it offers teaching and support to new nurses throughout their first year.