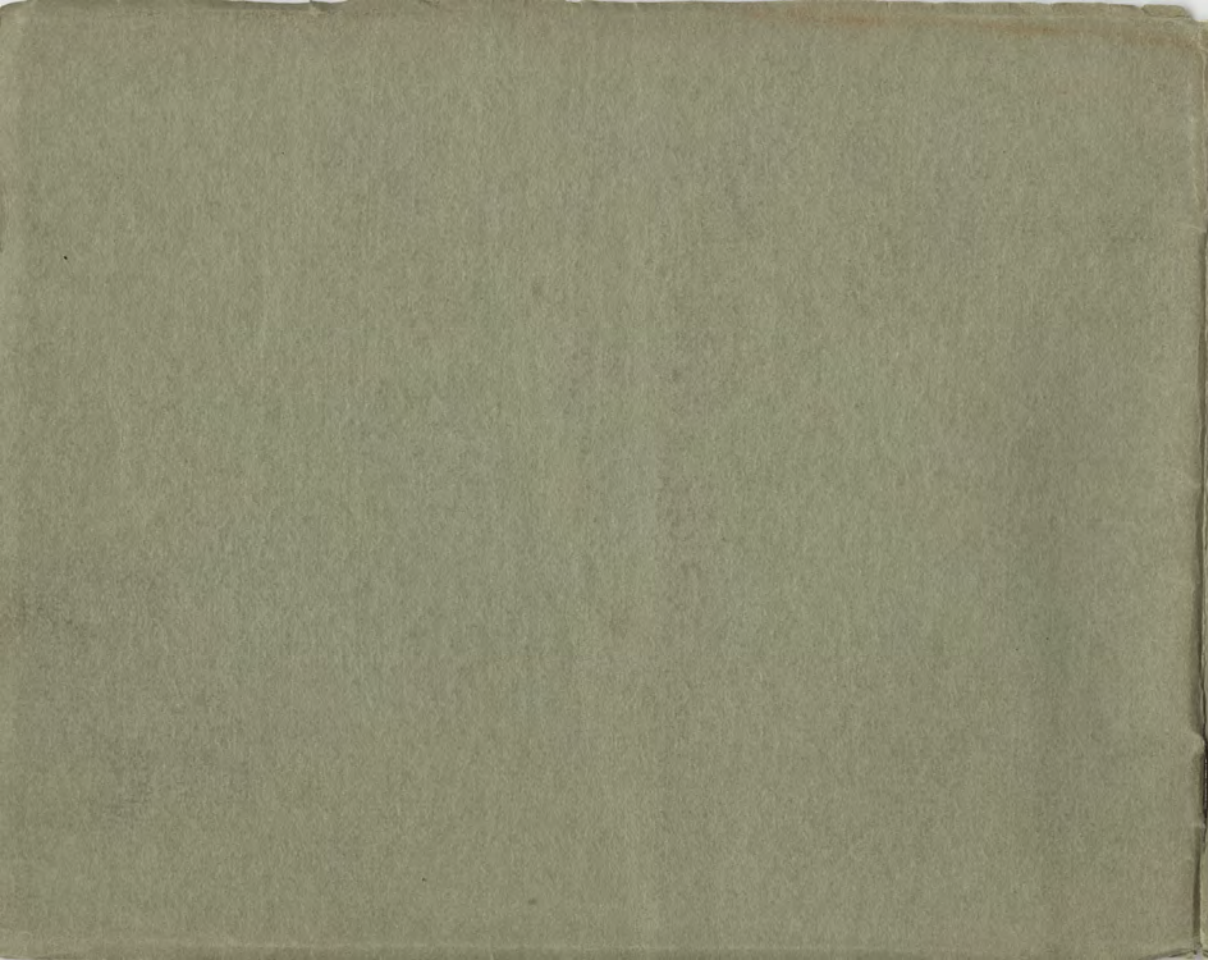


The UNIVERSITY
of ROCHESTER.



BUILDINGS AND GROUNDS.



The UNIVERSITY of ROCHESTER
BUILDINGS AND GROUNDS



THE ANDERSON STATUE

Erected in 1905. A heroic bronze figure on granite pedestal. The gift of Alumni and of citizens of Rochester. The work was done by Mr. Guernsey Mitchell of Rochester and Paris.





THE ANDERSON STATUE

ANDERSON HALL

Built in 1861. Of brown sandstone. Contains the chapel, lecture rooms and administration offices.



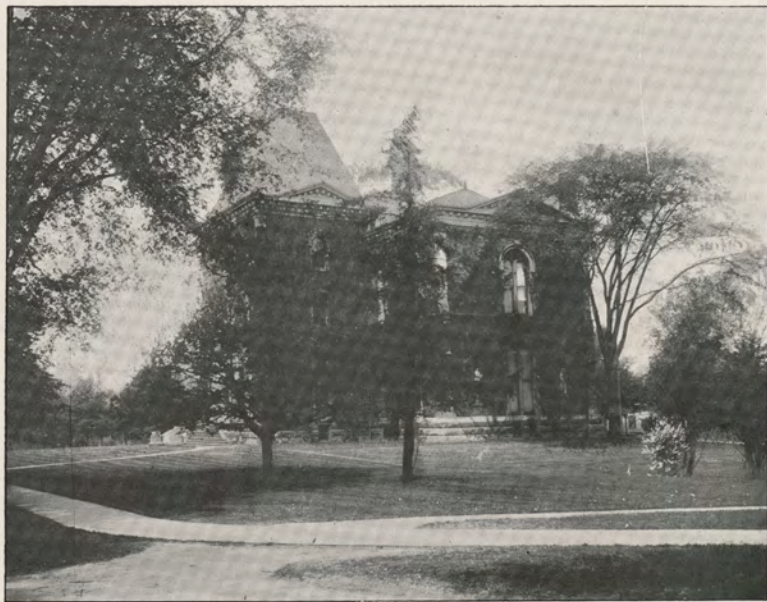


ANDERSON HALL

SIBLEY HALL

Built in 1874, of brown sandstone trimmed with gray sandstone. The gift of Hiram Sibley of Rochester. Contains the library on the first floor and in the basement; the geological museum and lecture room on the second floor. In the museum is the famous Ward collection.





SIBLEY HALL

REYNOLDS LABORATORY

Built in 1866, of brown sandstone. The gift of Mortimer F. Reynolds, of Rochester, in memory of his brother William A. Reynolds. Provides full facilities for the study of chemistry.



REYNOLDS LABORATORY

THE LIBRARY

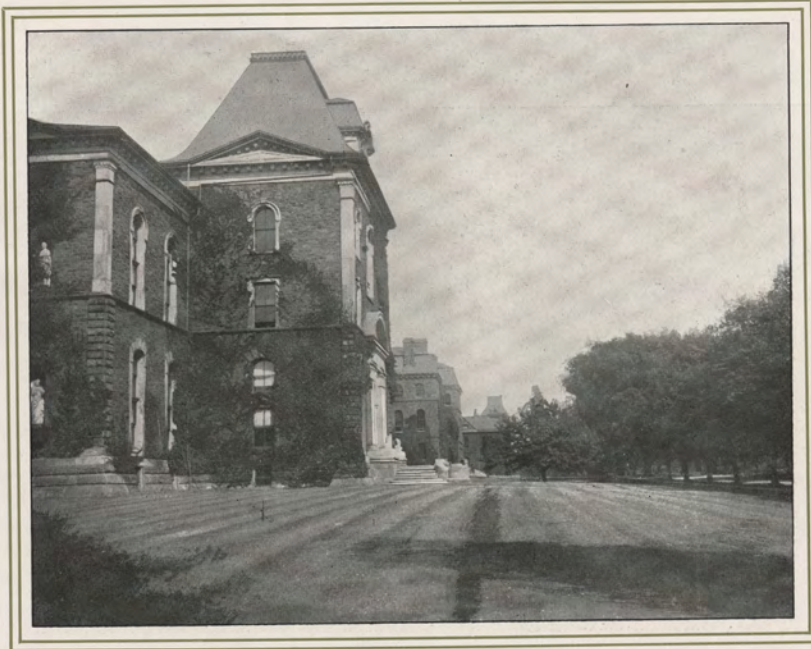
The portion of Sibley Hall devoted to the library was reconstructed during the summer of 1904, by Hiram W. Sibley, of Rochester, the son of the donor of the building. By this reconstruction the capacity of the library is increased to 60,000 volumes, and the opportunities for reading and study are greatly increased. The whole floor is now a large reading room with twelve alcoves, each with its table and special collection of books. About 20,000 books are kept in this reading room, accessible to all readers. The rest of the collection is provided for in the balcony and in the basement.



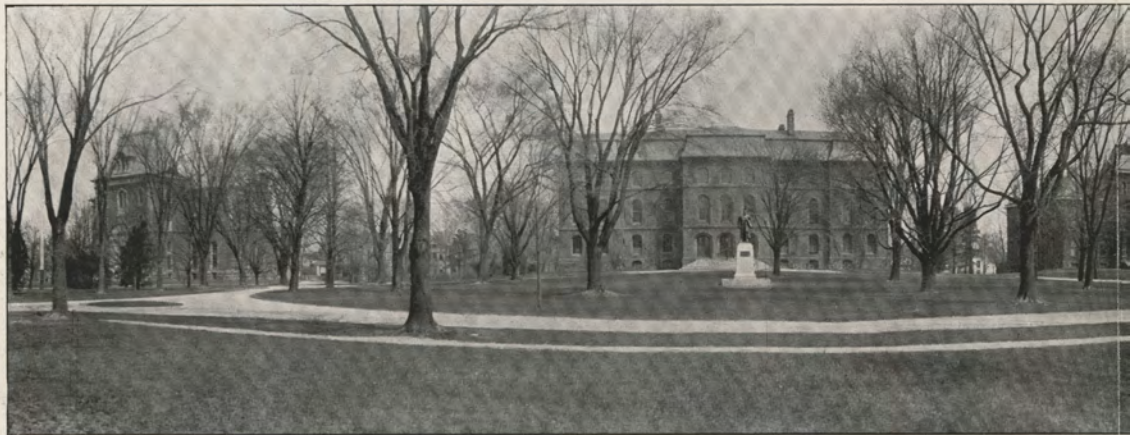
THE LIBRARY



THE LINDENS



THE OLD ROW



THE CA



CAMPUS

ALUMNI GYMNASIUM

Built in 1900, of gray Roman brick. The gift of the Alumni. Provides every facility for physical culture and athletic training.

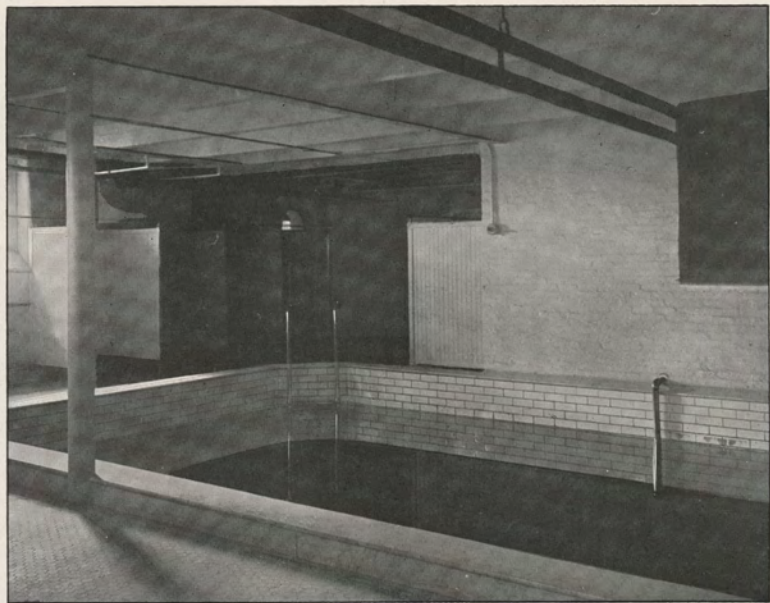




ALUMNI GYMNASIUM



CENTRAL HEATING PLANT. BUILT IN 1904



SWIMMING POOL

EASTMAN LABORATORIES

Built in 1905, of red brick with red sandstone trimming. The building contains laboratories and lecture rooms for physics on the basement and first floor, and for biology on the second and third floors. These laboratories and lecture rooms will be provided with thoroughly modern equipment for the study of the respective sciences.



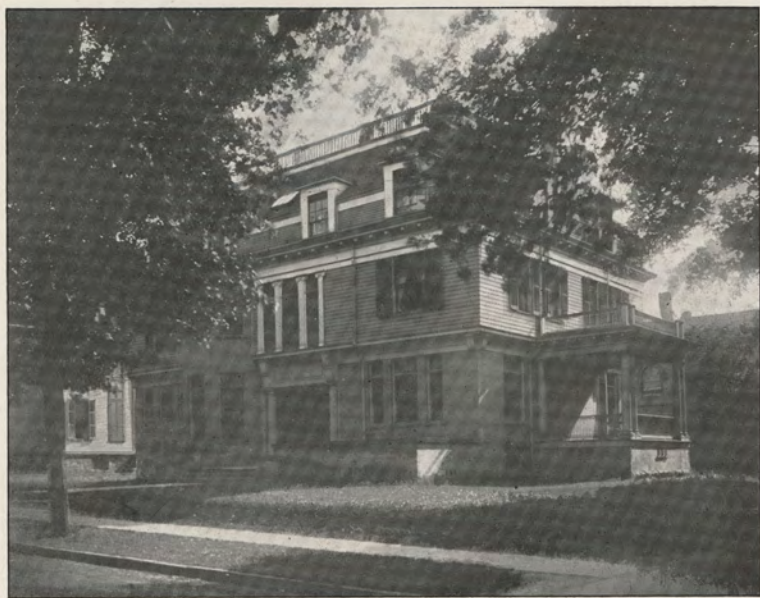
THE EASTMAN LABORATORIES



PRESIDENT'S HOUSE



COLLEGE AVENUE



ALPHA DELTA PHI. ESTABLISHED 1851. HOUSE AT 65 PRINCE STREET



PSI UPSILON. ESTABLISHED 1858. HOUSE AT 41 PRINCE STREET



DELTA KAPPA EPSILON. ESTABLISHED 1856.
HOUSE AT 265 ALEXANDER STREET



DELTA UPSILON. ESTABLISHED 1852. HOUSE AT 35 STRATHALLAN PARK



THETA DELTA CHI. HOUSE AT 96 PARK AVENUE



PHI EPSILON

ESTABLISHED 1884, AS "PHOTHEPIAN." NAME CHANGED
1904. LOCAL.

The Genesee Press:
The Post Express Printing Co.
Rochester, New York

