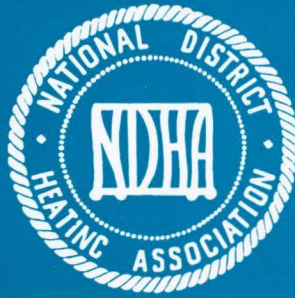
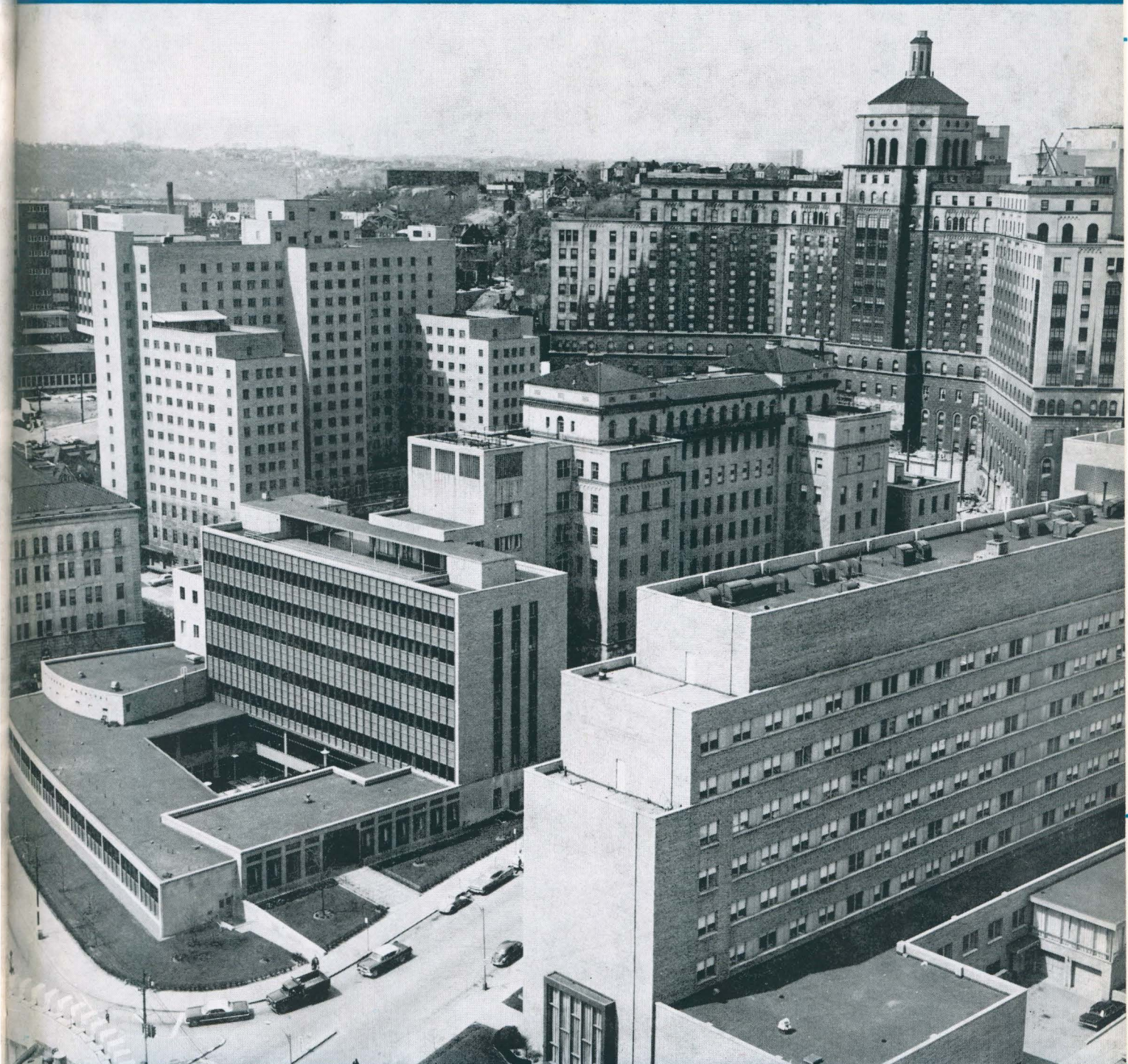


DISTRICT HEATING

PUBLISHED QUARTERLY SINCE 1915



WINTER 1967 — VOL. LII, No. 3



FOR STORY SEE PAGE 91

AN OFFICIAL PUBLICATION OF THE NATIONAL DISTRICT HEATING ASSOCIATION



UNIVERSITY HEATING AND UTILITY

NEWS

UNIVERSITY OF GUELPH GUELPH, ONTARIO, CANADA

The University has awarded a contract to build a Central Utilities Plant to cost in excess of six million dollars. Construction of the plant is to start immediately.

The plant will provide central refrigeration, heating, electricity, and distribution network to feed new and existing campus buildings. It will provide the utility support necessary for the University's dynamic expansion, which will see over fifty million dollars of construction underway in the period of one year.

To be built in stages, the plant will have an ultimate capacity of 450,000 lb of steam per hr. The first stage will contain boilers with a capacity of 250,000 lb of steam per hr — it is expected this will be sufficient to supply the campus needs up to 1970. Two further installations, each adding another 100,000 lb of steam per hr, will then be made. The boilers will be oil fired, but will have gas capability for ready conversion.



... IN THE NEWS ...

William M. Dull has been named General Superintendent of Detroit Edison's underground lines department, succeeding Clair J. Bartholomew who retired. Other changes in the department: **William R. Yelton** succeeded Mr. Dull as Assistant General Superintendent; **Bernard W. Hafeli** became Superintendent of the Cable Division; **I. A. Banyash** became Superintendent of Engineering and Services; and **Stanley Makar** was made Assistant Superintendent of the Steam and Conduit Division.

« »

Elbert C. Webster, Supervisor of Steam Production at the Dayton Power and Light Company, recently had his 25th service anniversary.

UNIVERSITY OF ROCHESTER ROCHESTER, N. Y.

Excavation has begun for the expansion and modernization of the University of Rochester's heating plant and electrical distribution facilities and the construction of a chilled water plant. It is estimated the work will cost about \$6.5 million.

The water plant to be built next to the present heating plant will provide 10,500 tons of refrigeration initially. It eventually will permit central air-conditioning to many of the new and some existing buildings on the River Campus and Medical Center.

The addition to the heating plant will include a boiler capable of producing 150,000 lb of steam per hr. The University's present largest boiler can produce 100,000 lb per hr.

James O. Dungan, Assistant Superintendent, Physical Plant Engineering, reported the present heating plant's load is expected to double over the next ten years. He estimates the heating plant additions and about 60 per cent of the chilled water lines will be finished in a year.

Robert D. Martin, General Manager of Wholesale, Governmental and Steam Sales at the Consolidated Edison Company of New York, has joined the ranks of retirees. He was President of NDHA in 1947-48, and is now a Life Member.

« »

C. W. Easton has been elected President of the Seattle Steam Corporation. He was formerly the Vice-President and General Manager.

Seattle recently completed an expansion program costing nearly \$1 million, and included additional generation equipment, 6,600 ft of additional high-pressure mains, and added fuel-oil storage.

STATISTICAL STEW . . .

How often does the average worker change his job? Well, the U. S. Department of Labor did a little research and came up with these statistics: In the 20-24 age group, the average worker will probably change his job 6.6 times during his lifetime. Those in the 25-34 age group will change jobs 4.8 times. Even those in the 45-54 group can expect to change jobs 1.4 times before retirement.

Pan American Coffee Bureau recently decided to find out how Americans like their coffee. Here are the results: Of the 107 million Americans who drink coffee, 31% drink it black, 39% use milk and sugar, 19% add only milk or cream and 11% add only sugar. Drinking habits vary greatly from region to region. For example, 54% of westerners like their coffee black while in the east only 15% favor it that way.