

UNIVERSITY OF
ROCHESTER



PHOTOGRAPHY BY IRA BLOCK

HARMONY HOUSE
PUBLISHERS LOUISVILLE

87

A LOOK BACK AT ROCHESTER



SELECTIONS FROM THE PHOTOGRAPHIC ARCHIVES



The former United States Hotel was the first home of the University, with classes held here from 1850 until 1861. Classroom space was shared with the Rochester Theological Seminary. This building is still standing in downtown Rochester, on West Main Street near Broad Street.



This is the Rochester Class of 1853, shown posing in the earliest known photograph related to the University of Rochester.



The faculty assembles for a photograph in the spring of 1877. Seated from left: Professors Albert H. Mixer, Asahel C. Kendrick; President Martin Brewer Anderson; Professors Isaac F. Quinby, Samuel A. Lattimore. Standing, from left: Professors William C. Morey '68, Joseph H. Gilmore, Otis H. Robinson '61.

Previous page: An 1884 engraving shows Anderson Hall on the right, and Sibley Hall, the library, at left.



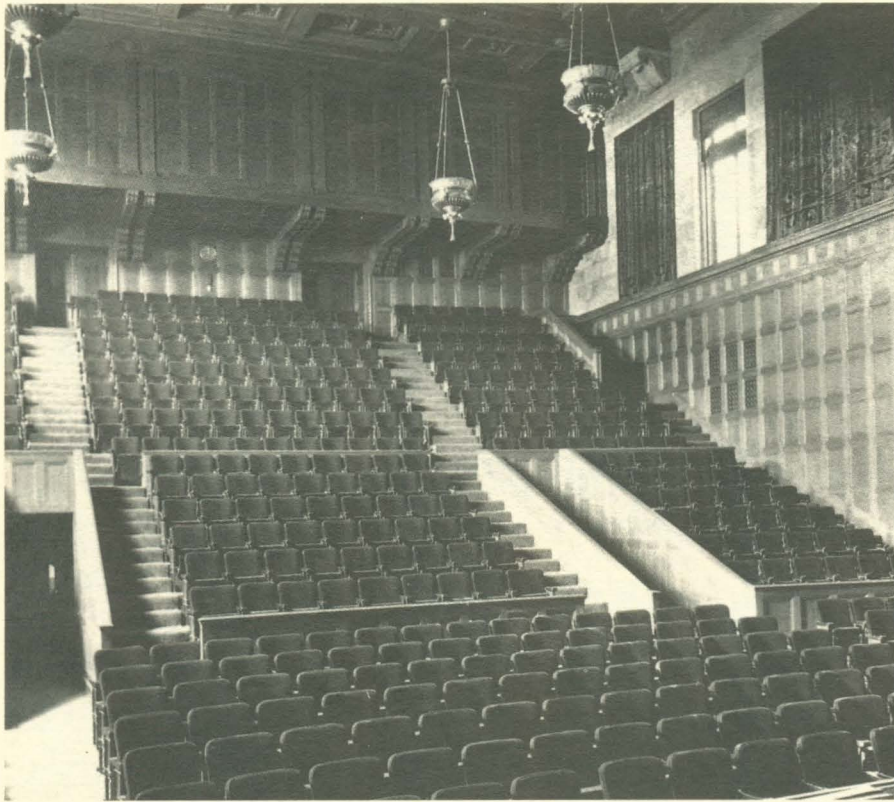
(Above) The main floor of Sibley Hall was the library when this picture was taken around 1888. It remained the principal library until 1930, when Rush Rhees was built. Sibley continued as the library for the College for Women until 1955.



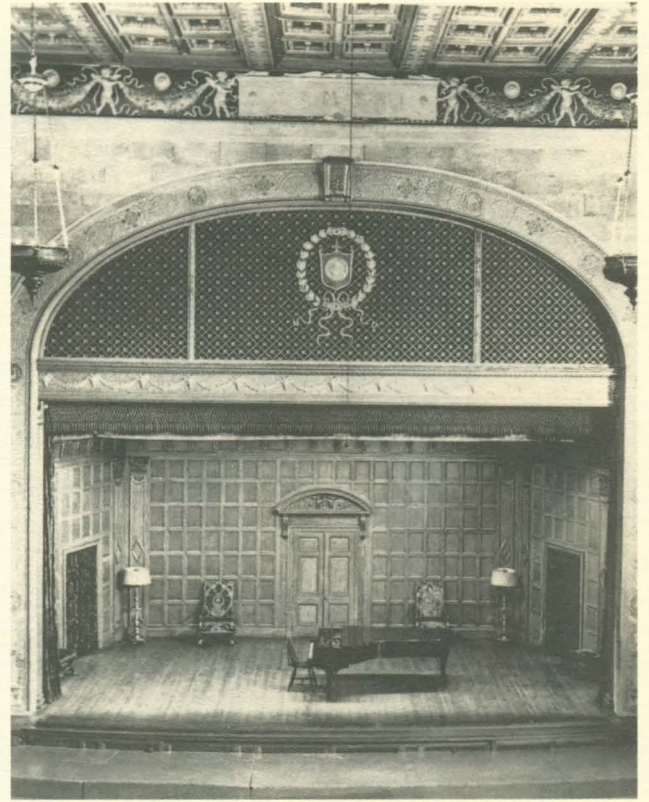
(Right) Chemistry professor Lattimore poses with his chemistry class in 1883. The original chemistry building, Lattimore Hall, was named for him on the River Campus.

(Below) The Pioneer Class, 1904. Women were admitted to the University in 1900, and women transfer students had graduated in 1901, 1902 and 1903. This was the first graduating class of women who had enrolled as freshmen.





The brand-new performance hall at the Eastman School of Music, Kilbourn Hall, is pictured after its completion in 1922.



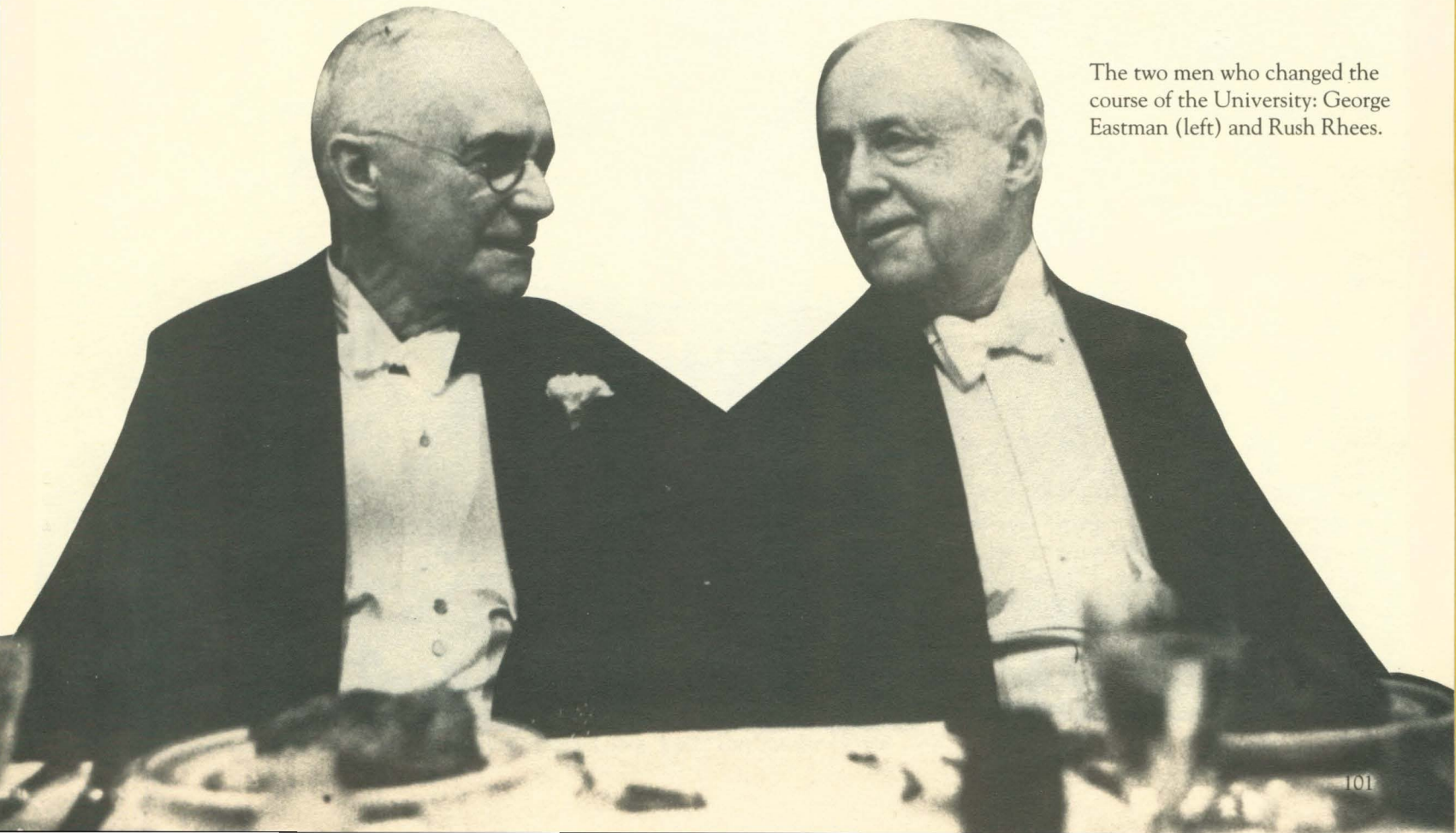
The beautifully panelled Kilbourn Hall stage is shown prepared for a piano recital in the 1920's.



The Eastman Theatre is shown here in the 1920's, not long after its construction.



Howard Hanson conducts a rehearsal of the Eastman Philharmonia, the student orchestra, in the 1960's.



The two men who changed the course of the University: George Eastman (left) and Rush Rhee.



Thanksgiving Day, 1919, at the University's athletic field. Rochester is playing Hobart on a snowy field. This field was located on a site now occupied by East High School.



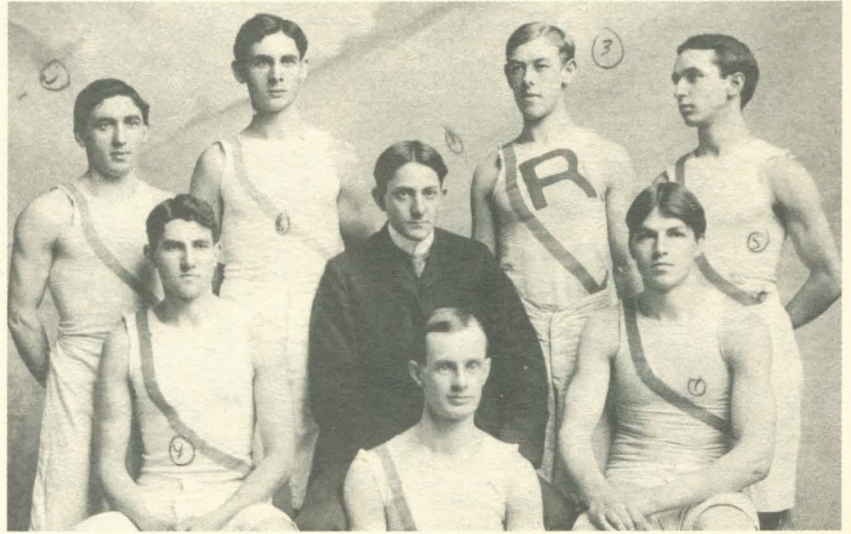
This serious group of football players was the first to represent the University in intercollegiate competition in 1889.

Rochester's 1943 football team was one of the University's best, with a 6-1 record and wins over Yale, Carnegie Tech, Baldwin-Wallace, Case, Rensselaer and Colgate. The team here is celebrating the 14-6 win over Colgate. Coach Dudley DeGroot sits in front of the happy squad, composed mostly of Marines and sailors in the Navy V-12 College Training Program.





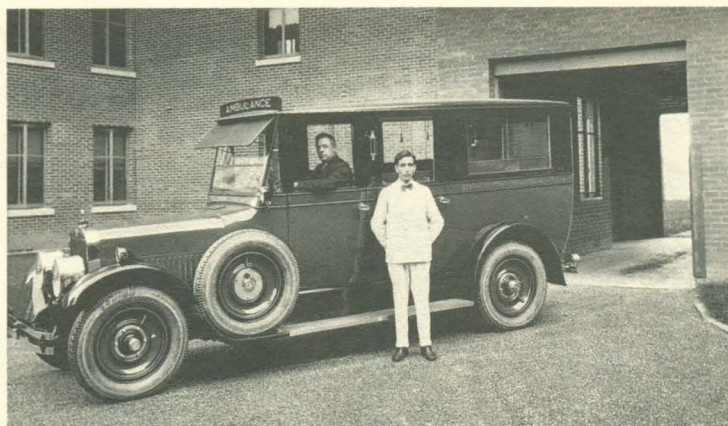
The Rochester basketball team of 1941 was, according to UPI, the nation's only undefeated team, going 16 - 0 under coach Lou Alexander. Alexander is shown here talking to players (left to right) Tuck Faulkner, Bob Patchen, Bob Erickson and team captain Glenn Quint.



The University basketball team of 1902.



The Rochester vs. RPI football game at Fauver Stadium on a "Dad's Day" in the 1950's.



The hospital's brand-new ambulance is proudly displayed in this view from 1926. Hospitals at this time routinely operated their own ambulance services.



Dr. George W. Corner's anatomy class was among the first classes taught at the new medical school in 1925.



The radiology team in action in 1926. Seated is Dr. Stafford Warren, head of the radiology department, and later the dean of the Medical School at UCLA.

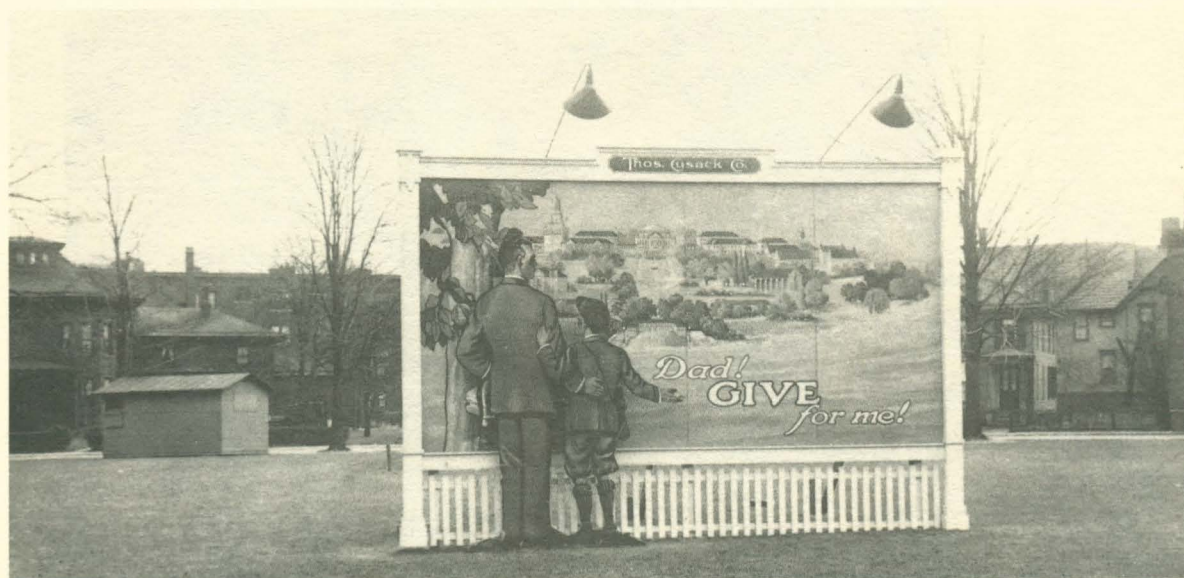


The University of Rochester Strong Memorial Hospital opened in January of 1926, not long before this photograph was taken. It continues to serve as a teaching hospital for the medical school.

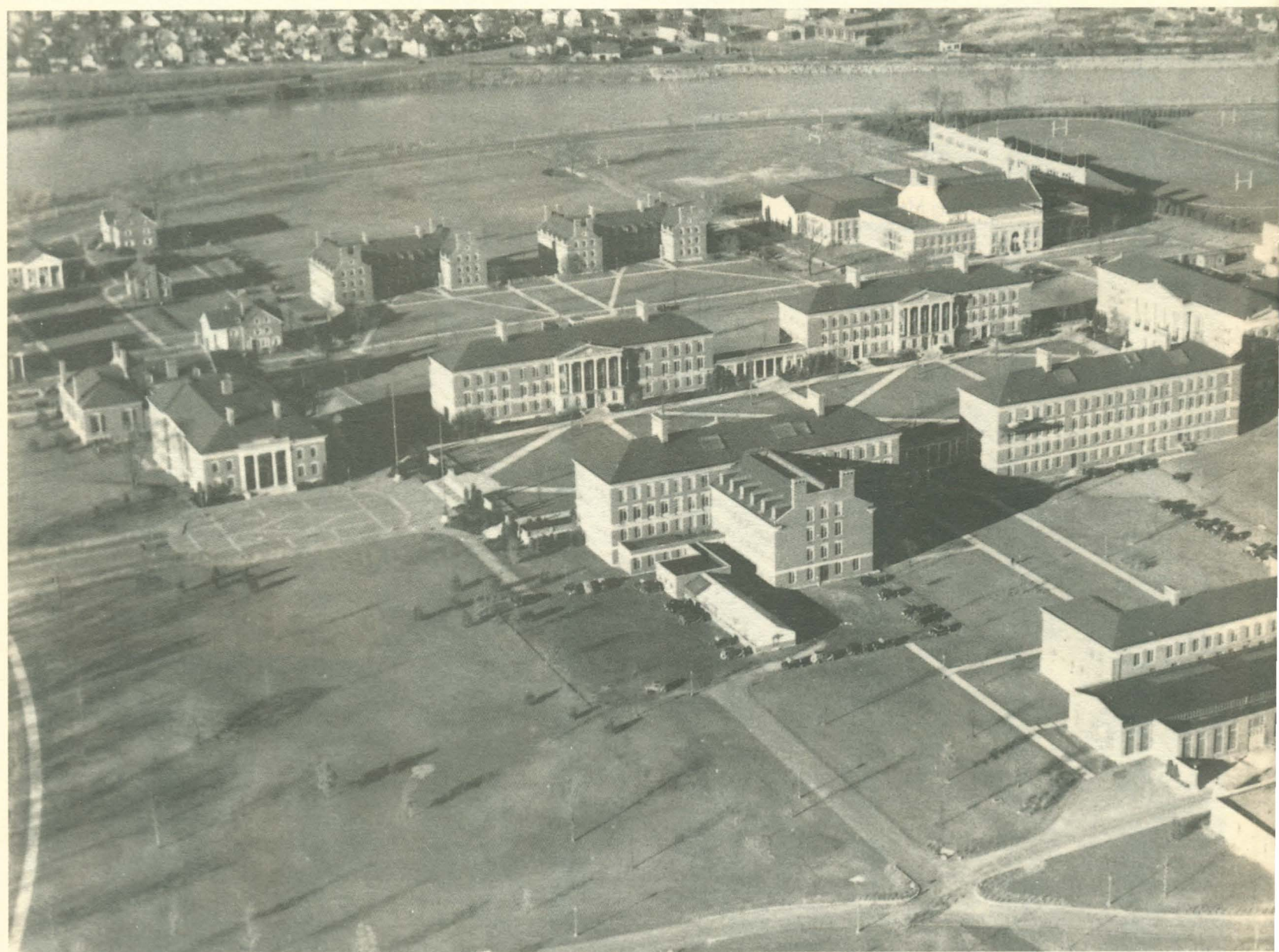


The founding dean (1922 - 1953) of the Medical School, Dr. George Hoyt Whipple, conducts a pathology class in 1950. Dr. Whipple won the Nobel Prize for Medicine in 1934.

This is the original lobby of Strong Memorial Hospital in 1926. This space is now the main reading room for the Miner Library.



This billboard was part of the campaign of 1924 that raised money for the construction of the new River Campus.



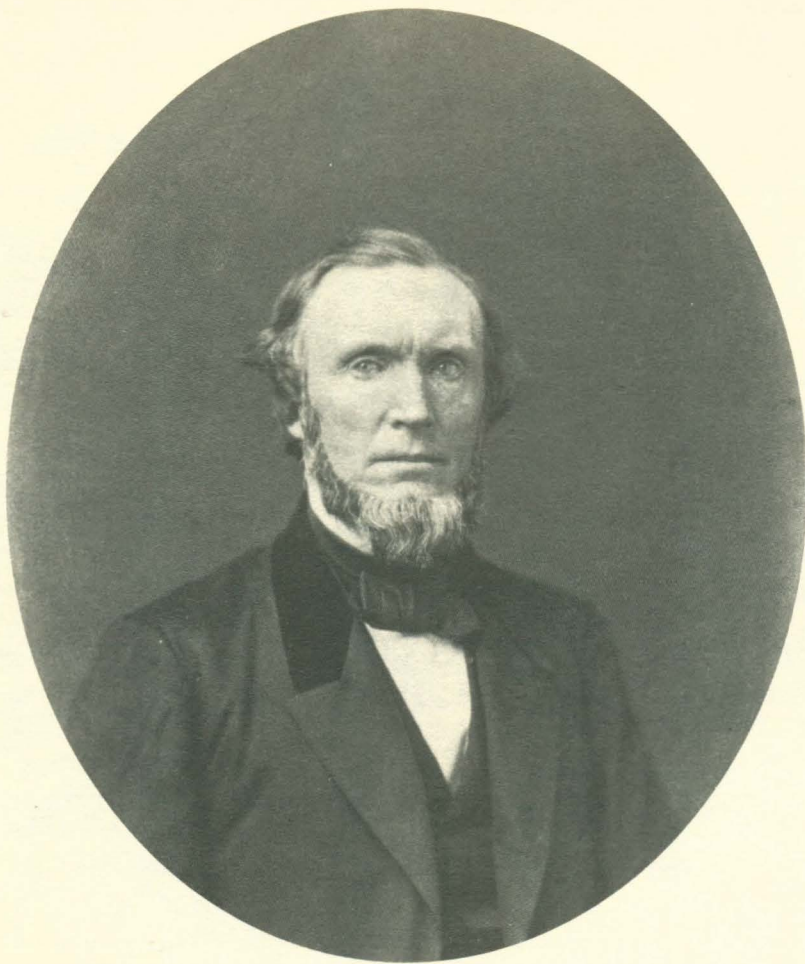
The new River Campus opened in the fall of 1930. This aerial photograph was taken in the 1930's. Although the buildings as seen from the Quadrangle are virtually unchanged, their uses have changed dramatically. The current home of the William E. Simon Graduate School of Business Administration, for example, was used for biology and other sciences. Lattimore Hall was originally a chemistry building. The greenhouse in the center of the picture is the only structure to have been totally removed from this part of the campus.



President Rush Rhees turns the first ceremonial piece of earth at ground-breaking ceremonies for the new River Campus on May 21, 1927. The bearded gentleman behind him is John Pixley Munn, Class of 1870 and Chairman of the Board of Trustees from 1916 to 1931.



The Quadrangle is under construction in this photograph from April of 1929. From 1927 until the fall of 1930, a total of 11 buildings on the original campus were completed.



The University of Rochester's first president, Martin Brewer Anderson, left, was a Baptist minister, and served the University as president from 1853 to 1888. Ninety-five years after this 1860 photograph was taken, the statue of Anderson was brought from the old Prince Street campus to its new resting spot on the River Campus. The statue is shown passing the new women's residence hall and the gymnasium.



The University's second president, David Jayne Hill, was also a Baptist minister. During his term in office, from 1888 to 1896, Hill liberalized the Rochester curriculum. This photograph was taken in 1891.

President Rush Rhees, who retired in 1935 after 35 years in office, stands with his successor, Alan Valentine, in the spring of 1936. President Valentine served from 1935 to 1950.



W. Allen Wallis (above), Cornelis de Kiewiet's successor as president, took office in 1962, relinquishing it in 1970 to become the University chancellor and chief executive officer until 1975.

Cornelis de Kiewiet (left), Rochester's president from 1951 to 1961, is seen here in 1952, breaking ground for the new men's dormitories.

Robert L. Sproull (right) became Rochester's president and chief executive officer in 1975 and served nine years in office. He is shown at the Senior Picnic in 1981.

Dennis O'Brien (below), president since 1984, is seen here speaking to students and faculty at a convocation in Strong Auditorium.

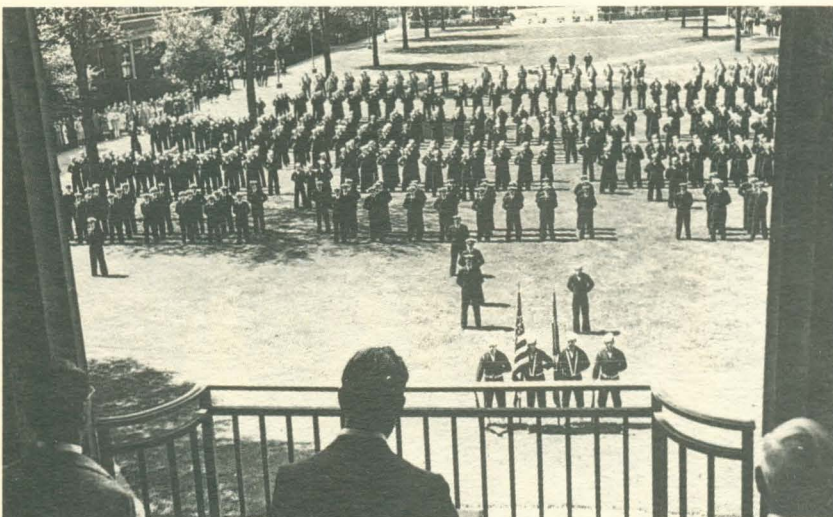




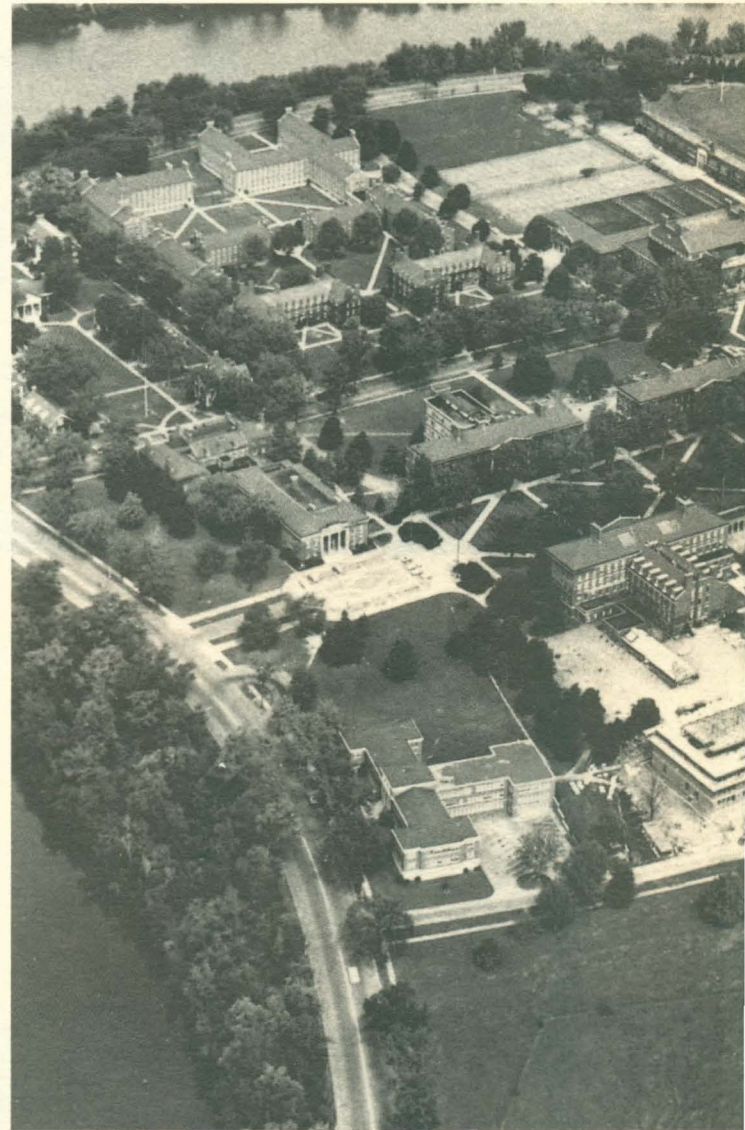
In Cutler Union dorm at the College for Women, 1946.



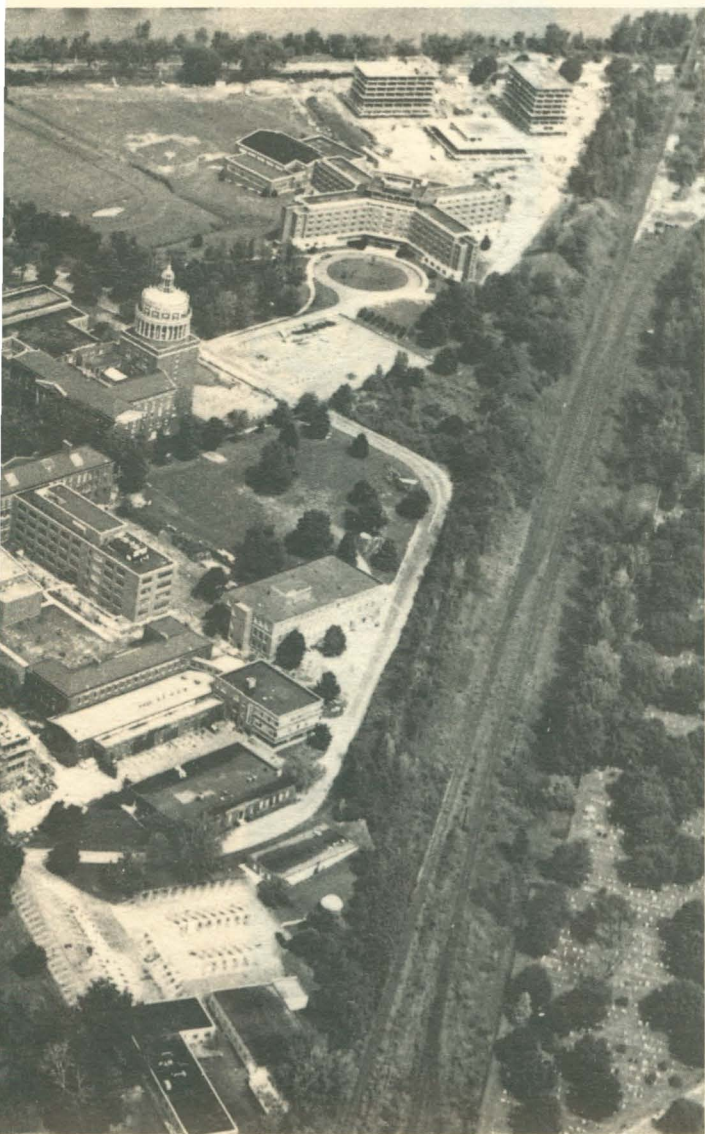
A formal fraternity dance circa 1960.



President Alan Valentine addresses the Navy trainees on the Quadrangle on V-E Day — May 8, 1945.



This aerial view of the campus is from 1962. Notice the Towers and Hopeman Hall under construction.



The annual flag rush pitted the freshmen against the sophomores in a usually good-natured contest. The 1941 flag-grab shown here was easily won by the freshmen. The contest was outlawed at Rochester in the 1960's.



Coffee-hour in the Welles-Brown Room of the Rush Rhees Library in 1947. The crowd in this picture was attending a Humanities Conference.



The first Boar's Head Dinner was celebrated at the University in 1934, and it has survived until the present day. This photograph was taken of the December, 1938 festivities.



On the fraternity quad, late 1930's.

The University is truly on the course to its own farthest star. The job ahead of us, fortunately, is not to find the course but to adhere steadfastly to it.

W. Allen Wallis, Inaugural address, 1962